

# KITCHEN

2603 BAYTREE DRIVE



*This beautiful kitchen remodel features an enlarged French window, antique corbels support hood and large antique ornament on backsplash tile.*



*Antique mirrored glass on the refrigerator and pantry doors adds additional charm and character to this newly renovated kitchen.*

## PROJECT DESCRIPTION

With a family of four children and a mother who loves to cook, the kitchen was woefully inadequate. By adding two additional feet onto the back of the house, the space became much more functional for a large family. A small white island has been replaced with a large cherry island finished in Black Forest stain with massive legs and a prep sink. A striking French casement window was installed over the sink adding to the feeling of space and air. The extremely creative homeowner provided many of the decorative elements including the antique door leading into the pantry, a gorgeous rusty backsplash detail and the mirrored opaque glass on the refrigerator and pantry doors. Her visions of a stunning, soft white perimeter with a brown glaze, a dark island and vintage celadon hutch make this a dramatic but totally inviting living space.

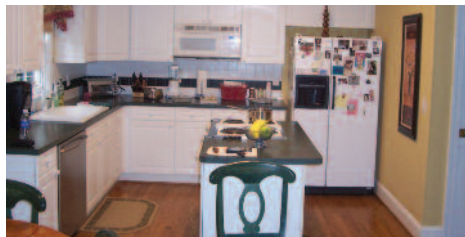
## REMODELER

**Booe Building & Remodeling**  
**Jim Booe**  
 336.282.8991  
 jbooejr@triad.rr.com  
 www.booremodeling.com

## DESIGN PARTNER

**My Dream Kitchen**  
 Scott Koehler  
 336.275.8402  
 scott@mydreamkitchen.com  
 www.mydreamkitchen.com

## BEFORE



## DIRECTIONS

2603 Baytree Drive, Greensboro

North on Lawndale Drive. Right on Regents Park. Left on Baytree Drive.

## GBA Associate Members

Butler Lighting  
 Ferguson Enterprises, Inc.  
 Imagine Tile & Stone  
 Ivey Lane, Inc.  
 Wally Overman Plumbing, Inc.