

GREENSBORO BUILDERS ASSOCIATION | 2022

PARADE OF HOMES



OCTOBER 8-9 | 15-16

GreensboroBuilders.org



Creating Beauty That Lasts A Lifetime



GRANITE MARBLE QUARTZ ONYX QUARTZITE PORCELAIN DEKTON



Amanzi Marble & Granite is a trusted name in quality residential and commercial countertops and stone accents. Centrally located in Kernersville, NC our 40,000 sq ft indoor showroom has one of the best selections of natural and manmade material in the Carolinas. Our professional in-house teams all work together, from start to finish, to provide our customers and contractors with the ultimate in customer service and satisfaction. No job is too small or too large for Amanzi Marble & Granite.

T-336.993.9998 F-336.993.9988 WWW.AMANZIGRANITE.COM

COMPLIMENTARY IN-HOME ESTIMATES AT AMANZIGRANITE.COM

INFO@AMANZIGRANITE.COM 703 PARK LAWN COURT, KERNERSVILLE, NC 27284



Exceptional Custom Homes

★★★★★ Rated!

A PROFESSIONAL PARTNER AT YOUR SIDE

You know what you want in your new custom home—the feeling, the conveniences. At **Walraven Signature Homes** we work with your ideas to bring them to life. Our vast experience in building custom homes makes decisions easy, fun and exciting.

WHERE WE BUILD

Looking to locate in Guilford, Forsyth or Alamance counties?

We are the builder for you. Find us in the following neighborhoods: *Oak Ridge* - Knight's Landing, Canter Cove, The Farm at Oak Ridge, Wolf Ridge, Pemberly, Oak Ridge Landing • *Summerfield* - Angels Landing, The Farm at Lake Brandt • *Greensboro* - Griffin's Gate in Grandover, Bethany
• *Burlington* - Waterford at The Lake

Have your own lot? You will find us great to work with as we build your dream home.

HOMES AVAILABLE SOON

Griffin's Gate at Grandover
Summerfield Angel's Landing



WALRAVEN SIGNATURE HOMES, LLC

(336) 442-8657 • (336) 207-7790 office
P.O. Box 130 • Oak Ridge, NC 27310



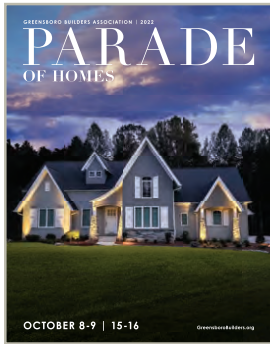
Like Us on Facebook



www.walravensignaturehomes.com

PARADE OF HOMES

Greensboro Builders Association



Saturday & Sunday

October 8-9 & 15-16

1:00 – 5:00 pm

Admission is FREE

Our Fall Parade of Homes will be held on **Saturday & Sunday, October 8-9 & 15-16** showcasing 31 newly constructed homes...with traditional open houses over the two weekends...along with some Virtual Tour Only homes that have been sold and/or under construction.

You can preview **Virtual Tours** for all Fall Parade homes on our website at www.GreensboroBuilders.org. Parade homes that are Virtual Tour Only are noted on the Parade entry page and website.

Open Houses will be held on Saturday & Sunday from **1-5 pm**...admission is free. This is a great chance to see the homes firsthand as well as meet and talk with Parade Builders and Realtors regarding homes they currently have or will have available.

Whether you are in the market to build or buy a new home, or just want to see the latest home design trends and amenities, the annual Parade of Homes provides a great opportunity to see a variety of homes and communities over the course of the two weekends. Many Parade homes are custom designed and built homes that are not regularly open for tours except during the annual Parade of Homes.

Download our free **Greensboro Parade of Homes APP** - for your Apple and/or Android phone - to access information on Parade entries, including driving directions between homes. Information remains on this app for six months which can also be used as a quick reference for contact information.



We hope you enjoy our Fall Parade of Homes!

Please follow CDC guidelines and safety protocols as you tour Parade homes.

Parade of Homes Builders

Arden Homes

Brian Thompson Homes, LLC

Builders MD, LLC

Building Dimensions, Inc.

Creative Building Group, Inc.

D.R. Horton

Disney Construction Co.

Don Mills Builders, Inc.

Garman Homes, LLC

Gingerich Homes, Inc.

Granville Homes, LLC

Heritage Homes of the Carolinas, LLC

Keystone Homes

L & K Builders, Inc.

Lansink Custom Homes, LLC

Precept Construction, LLC

R & K Custom Homes

R S Dezern Construction

Ray Bullins Construction Co., Inc.

Walraven Signature Homes, LLC

Wisemasterbuilder Design & Custom Homes, LLC

Wolfe Homes

Follow Parade Updates



Greensboro Builders Association
Greensboro Builders

www.GreensboroBuilders.org



Marble Granite World has been designing, fabricating, and installing granite, marble, quartz, and other natural stones in residential homes and commercial properties across the Triad since 1999.

Every project is custom fabricated in Kernersville, NC and every customer receives the very best in personalized customer service. As a family-owned business with over 50 years of experience in the industry, Marble Granite World has the expertise to turn your natural stone dreams into reality.

MARBLE GRANITE WORLD

321 E. BODENHAMER ST., KERNERSVILLE, NC 27284
(336) 992- 5214

MARBLE • GRANITE • QUARTZ • ONYX
TRAVERTINE • SOAPSTONE • DEKTON

KITCHENS • BATHROOMS • FIREPLACES • BARS
OUTDOOR • RESIDENTIAL • COMMERCIAL

sales@marblegraniteworld.com

www.marblegraniteworld.com



What's New in Home Design Trends



The pandemic shifted the way individuals work, play, and live at home. At the start of each year, the Best in American Living Awards (BALA) recognizes dozens of new projects from this past year featuring the most innovative layouts and eye-catching design elements. Functional and dazzling home features are reflected in the award-winning designs this year.

Whether you're looking to buy a new home, thinking about renovating your current one, or you're just interested in what's new in home designs, here are some of the biggest trends you will see dominating this year.

Beamed and/or Stained Ceilings

Different detailing overhead creates a wow factor for both low and high ceilings alike, while stains and tonal materials provide a more cohesive room palette. This trend is especially popular in kitchens.



Creative Outdoor Spaces

Post-pandemic design continues to utilize the outdoors to develop spaces for relaxing, entertaining, home office or just taking in the views. Multi-level terraces, sunken living rooms with firepits and indoor courtyards are just a few examples of these designs.

Improved Indoor/Outdoor Connections

Emphasis on health and wellness has led to an increased focus on creating intentional, seamless transitions from indoors to outdoors.

Material choices can play a key role by visually connecting adjoining spaces, but even details as subtle as skylights in the kitchen or glass walls to take advantage of the surrounding views can usher in these natural connections. Landscape designs are also improving to seamlessly blend the home with the surrounding area.

More Durable Materials

As indoor and outdoor spaces continue to blend, materials that operate equally in both conditions are key to creating a smooth transition. This includes not only the doors or track systems to bridge the gap, but also selections such as ceiling treatments or flooring, where materials such as stone can provide a wow factor both inside and out.



Size Doesn't Matter

Spaces should get as much mileage out of their designs as possible, whether it's a remodeled great room/dining room/kitchen to improve functionality or a glass-encased room with doors to provide privacy when needed while remaining connected to the rest of the home.



Enhanced Focus on Function

Homes have had to work harder for their residents in recent years, and designs are adapting to incorporate more functional and multifunctional spaces to use. Examples include wine storage, prep kitchens, mudrooms and dedicated gym or workout areas.

Resort-like Amenities

More time spent at home means greater attention paid to features to enhance it, whether it's an outdoor lounge or a game room. Pets are especially important, with designs increasingly incorporating areas such as dog spas, pet pads or dog runs.

Take advantage of the opportunity to see these features and more firsthand as part of our Fall Parade of Homes... through our open houses and virtual tours. Utilize the Parade to find a builder who can create the new home of your dreams!



ADVANCING THE FUTURE OF HOMEBUILDING

Our people, service and solutions equip you to outperform today as we invest in new technologies and automation to help you transform tomorrow.



YOUR TRUSTED SOURCE FOR:

- Windows
- Doors
- Millwork
- Hardware
- Siding
- Decking

VISIT [BLDR.COM](https://www.bldr.com)

Greensboro
336-884-5454

Clemmons
336-712-9910

Most Desired Kitchen & Bath Features



Today's new home buyers have a variety of choices when it comes to modern home design. Two areas in the home, kitchens and baths, generally attract the most attention. While styles, sizes and décor can vary, there are certain key features home buyers want in kitchens and baths. According to research by the National Association of Home Builders (NAHB), prospective and recent home buyers most desire flexibility and comfort in their kitchens and baths.



Most Desired Kitchen Features

During the pandemic, many individuals spent less time entertaining in the kitchen and more time devoted to actual cooking. With a variety of kitchen gadgets and cooking ingredients, it's no surprise that double sinks and pantries stood out as "must have" items in the kitchen. In fact, more than four of every 10 buyers think the double

sink is so essential they would be unlikely to buy a home without it.

Research also revealed buyers' preferences for more space to accommodate time spent preparing and enjoying meals. Survey results showed that more than 70% of buyers wanted a table space for eating (78%); a central island (77%) and drinking water filtration (76%).

Survey results also revealed that buyers would like both practical and customizable features in a kitchen. More than two-thirds of all buyers said they wanted recessed lighting (69%), a customized backsplash (69%), and pull-out shelves (68%).

Most Wanted Bathroom Features

The four most-wanted bathroom features are all related to the home's primary bath. At the very top of the list: a linen closet in the primary bath, rated as essential or desirable by 76% of home buyers. Other features that were among the most desired in the primary bathroom were a shower stall and a tub (74%) and a double vanity (69%).



The shower and tub combination in the primary bath ranked as the most "essential" feature, with more than a third (36%) of buyers stating they would be unlikely to purchase a home without this feature.

What's most important to you? Don't miss your opportunity to see the latest in kitchen and bath design and features in today's new homes as part of our Fall Parade of Homes.




GREENSBORO SHOWROOM
4000 A&B SPRING GARDEN ST, GREENSBORO
336-617-6097

WINSTON-SALEM SHOWROOM
701 SHALLOWFORD ST, WINSTON-SALEM
336-726-1600



Moving your ideas from paper to the street.



Bill Black
CHEVROLET

www.BillBlackAuto.com

601 East Bessemer Ave. | Greensboro, NC 27405

Mike White | 336-994-3797

FIND NEW ROADS™



BUSINESS
ELITE

336-275-9641

CHEVROLET



Popular Spaces in Post-Pandemic Homes



The pandemic changed our lives, especially the time spent at home. Many homeowners have reevaluated what areas in their home they would like to modernize to fit their changing needs. What are the most sought out designated spaces buyers are looking for in new homes? According to a survey of recent and prospective home buyers by the National Association of Home Builders (NAHB), spaces for working out, working from home and outdoor spaces are among the most wanted specialty areas in a new home.

Outdoor Living

With more time spent at home the past two years, getting some fresh air and spending time outside the home has continued to grow in popularity. A majority of home buyers ranked a patio (87 percent) and a front porch (81 percent) among the top essential features in a home. An expanded outdoor space can help homeowners enjoy nature, relax, and entertain while continuing to social distance.



Exercise Room

Another trend among home buyers, likely accelerated by the pandemic, was the request for an exercise room. Nearly half of all home buyers (47 percent) rated an exercise room as essential or desirable. When this

question was asked in 2003, 27 percent of buyers wanted an exercise room...a full 20 percentage points lower than the current response. A majority of millennials (61 percent) and Gen Xers (62 percent) were among the age groups most interested in exercise space.

Home Office

As individuals begin to return to work, some employers are allowing their employees to continue working from home in a full- or part-time capacity. Therefore, it is no surprise that the survey revealed that a majority (63 percent) of home buyers want a home office. Home offices

are particularly popular among the millennial age group (74 percent) and married couples with children (70 percent). In terms of size, research found that a majority (77 percent) of the buyers who want a home office would like the space to be at least 100 square feet, which is smaller than the average size of a bedroom, or larger.



Laundry Room

Cleaning up the competition, NAHB's survey showed that a laundry room is the most wanted specialty room, with 87 percent of home buyers rating it essential or desirable. Laundry rooms are not just for dirty clothes, many homeowners utilize this space for extra storage.



Take advantage of the Fall Parade of Homes to see the latest in these and other features being incorporated in today's new homes.

from
BOLDLY
INSPIRED



to
BEAUTIFULLY
DONE

Get inspired at our Greensboro showroom.
And learn how to get your remodeling
project... **beautifully done.**

MARSH
K&B
KITCHEN & BATH

336-273-8196

2503 Greengate Drive, Greensboro
marshkitchens.com



TRANSIT

SITE SOLUTIONS

- Grading
- Hauling
- Clearing
- Chipping
- Demolition
- Silt Fence
- Erosion Control
- Forestry Grinding

336-870-1722

Technology Connected Homes

The evolution of technology has opened a range of possibilities for a connected home. Now more than ever, remote-controlled, voice-controlled devices and wireless appliances are found in homes. The National Association of Home Builders (NAHB) surveyed prospective and recent home buyers and found that the most desired technology features in the home are related to comfort and security.

As homeowners spend more time in their living space, achieving an optimal level of comfort is at the forefront. When it comes to technology features to help enhance enjoyment while at home, a programmable thermostat was rated essential or desirable by 77% of home buyers. Also temperature-related, a majority (59%) of home buyers said they wanted a multi-zone HVAC system, which allows homeowners to adjust the temperature in different areas or "zones" of the home.

At home or away, home buyers want to make sure their family and their property are safe. Security features were also highly ranked among the essential or desirable technology features for home buyers. A majority of buyers said they would like security cameras (77%) and a video doorbell (70%). When it comes to a home security system, connectivity capabilities made the difference. Most buyers preferred a wireless system (70%) compared to a wired security system (59%).

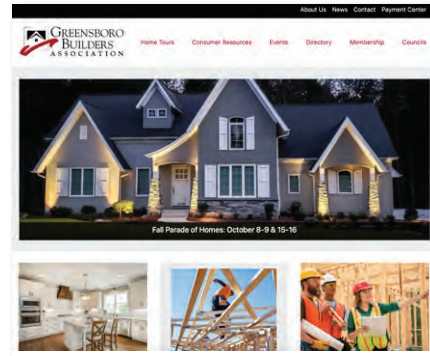
It will probably come as little surprise, but households with children are also more likely to find different types of technology essential. Nearly a quarter (23%) of married couples with children rated voice-activated assistants (such as an Echo or HomePod) as desirable or essential, compared to only 10% of married couples with no children.

There is also a significant difference when it comes to operating major appliances. More households with a married couple with children say they want a remote-controlled smart washer and dryer compared to a married couple with no children. Smart refrigerators controlled remotely were also rated more essential or desirable for married couples with children.



Building or Remodeling

Utilize our **online membership directory of industry professionals**



Follow Us

Greensboro Builders Association



www.GreensboroBuilders.org

We look forward to
"Serving Your Heart's Desire"



Hart Appliance Center

336-854-9222

2201 Patterson Street, Greensboro, N.C.

Hours: M-F 9:30 - 5:30; Sat 10-2; Closed Sun.

www.hartappliancecenter.com



Butler LIGHTING

*Now featuring a large selection of
chandeliers and pendants
Made in the USA*

Visit one of our locations

High Point - 4380 Regency Dr.
MF 8-5pm PH- 336.899.2344

Greensboro - 2203 N.Church St.
MF 830-5pm PH - 336.412.2521

www.butlerlightingusa.com



OUR PROMISE TO YOU

Building or renovating your home is easier with
the right financing. **Here are some benefits to
working with the McCoy team:**

- Top Construction Lending Team in NC
- Construction lending experts 'Single-Move' Construction loan program
- Build your dream home now, while planning the sale of your current home
- Affordability - Interest only payments during construction
- Streamlined process
- Quick draw turn times
- Great technology (BUILT) for effective communication, draw servicing and progress tracking
- Flexible program options
- Land equity used towards down payment when you already own the property

 **The
McCoy Team**
at Intercoastal Mortgage, LLC



Branch Mgr/Sr Loan Officer
NMLS ID # 485895

DANIEL MCCOY

336.255.0445
daniel.mccoy@icmtg.com



Sr Loan Officer
NMLS ID # 485895

DANNY MCCOY

336-210-1343
danny.mccoy@icmtg.com



Loan Officer
NMLS ID # 1325664

ERIC GILLESPIE

336-580-7350
egillespie@icmtg.com

CONTACT OUR TEAM

336-378-0560

mccoyteam@icmtg.com

609 Eugene Ct, Ste A Greensboro, NC 27401



Company NMLS ID # 56323 (www.nmlsconsumeraccess.org) • Program guidelines listed are intended as reference information and do not imply or infer a guarantee of lending. Loan programs, rates and qualifications are subject to change at any time. • This is an advertisement. © ICM, LLC 08/2022

Giving Back to the Community

We are very fortunate that industry members give so generously of their time and resources to make a difference in the lives of others throughout our community. The Greensboro Builders Association (GBA) is involved in numerous community service projects on an ongoing basis, giving of both financial resources and in-kind contributions.

Providing affordable housing remains an ongoing area of emphasis. We have worked with various organizations over the years such as the City of Greensboro, Home Inc., Habitat for Humanity of Greater Greensboro, and Housing Greensboro/Community Housing Solutions to assist with new construction and renovations to existing homes.



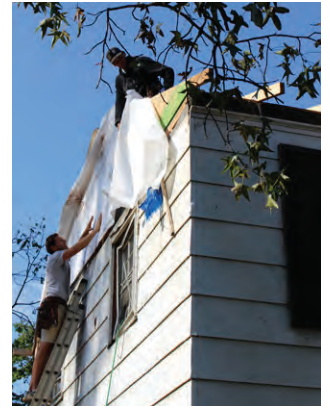
Raising Roofs...Builders for Habitat

In 2003, the Greensboro Builders Association entered into a partnership with **Habitat for Humanity of Greater Greensboro** to build 12 homes in one week. This initiative **Raising Roofs...Builders for Habitat** continues to be tremendously successful due to the generous contributions of Association members. To date, GBA members have constructed **64** Habitat homes in neighborhoods such as Stonegate Crossing, The Village at Northside, Quail Oaks West, and Asher Downs.

Planning is underway for this fall to begin construction of our **65th** Habitat home which coincides with celebrating the Association's 65th anniversary as a local trade organization.

ReBuilding Hope

In 2011, GBA Remodelers Council members formed a partnership with **Community Housing Solutions** to conduct home repairs and renovations called **ReBuilding Hope**. More than twelve homes have been renovated to ensure homes are warmer, safer and drier for those in need in our community. In 2014, we completed an entire home renovation in the historic Glenwood neighborhood. In 2016, we built a new home on Douglas Street in the Ole Asheboro neighborhood. In 2018 we renovated a home partially destroyed by a tornado and in 2021 we completed construction of a new home on Eastwood Avenue.



Construction Careers

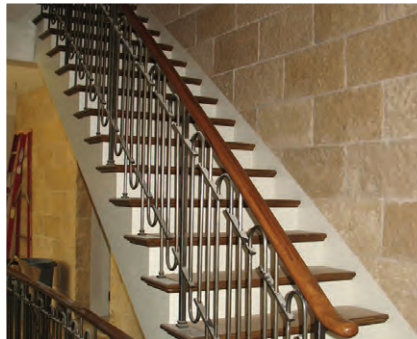
Building a workforce for the future is critically important to our industry. GBA members volunteer with Guilford County Schools, GTCC, Junior Achievement, Skills USA, and other groups to promote construction careers. At a time when countless college graduates are finding themselves underemployed and saddled with student debt, it is important for students and their parents to know there can be equally rewarding career opportunities within the construction industry.



If you or someone you know is looking for a new career, don't overlook a potential career path in construction. Competitive salaries...on the job training...advancement opportunities...national industry growth are just a few reasons to explore a career within construction and/or related services.



CARTER[®] *Lumber*



If you're in the Triad area, we have everything you need to build on a strong foundation. From name brand products to manufactured components, we're the one-stop-shop for professional builders.

**747 Old Hargrave Rd.
Lexington, NC 27295
(336) 300-8160**

More than a lumberyard, Carter Lumber is one of the nation's top building materials suppliers. We carry a wide variety of products, ranging from framing, sheathing, trusses, and millwork to windows, doors, and kitchens.

To learn more and to see more of our work, visit carterlumber.com

CARTER[®]
Lumber

GREENSBORO BUILDERS ASSOCIATION

The Builders Your Friends Are Choosing



Whether you are looking to build a new home or remodel your existing home, call the builders your friends are choosing at the Greensboro Builders Association. Our members are licensed builders and remodelers and are dedicated to the highest standards of quality and building ethics.

Search our online builder directory at www.greensborobuilders.org for area building industry professionals, whether it's licensed general contractors, suppliers, trade contractors or service providers.



www.GreensboroBuilders.org

THE TRIAD'S FLOORING SPECIALIST SINCE 1979

WEEKS HARDWOOD
FLOORING

SCHEDULE
YOUR FREE
CONSULTATION



OUR COMPANY

We have been providing quality floors for over 40 years. Our name may say hardwood, but we do it all!

WHY CHOOSE US

- ✓ We always provide free in home consultations so you can make sure you're getting exactly what you want.
- ✓ We offer top of the line products, with the best price guaranteed. Choose from a variety of options to fit any budget.
- ✓ Every product we install comes with a comprehensive one-year labor warranty, so you can feel confident in your floors.

OUR SERVICES



WOOD FLOORING

We provide hardwood installation and refinishing in addition to installation of pre-finished flooring and engineered wood.



OTHER FLOORING SERVICES

In addition to hardwood, we also provide services for tile floors, carpet, vinyl plank flooring, and laminate.



COMMERCIAL SERVICES

We provide wood flooring, installation and refinishing services. As well as installation of vinyl plank flooring, carpet, tile, and laminate flooring for the commercial sector.



336-856-0202



www.weekshardwoodflooring.com



107 Guilford College Road, 27409



BEACON

BUILD MORE



Beacon, The Triad's
Preferred Supplier for
Building Materials

- Roofing
- Siding
- Windows
- Decking
- Metal
- Gutters

**Choose any one of our convenient
locations that best services your
business needs**

7614 Boeing Drive
Greensboro, NC 27409
(336) 668-9700

4523 Green Point Drive Suite 102
Greensboro, NC 27410
(336) 370-1700

2809-A Thurston Avenue
Greensboro, Nc 27406
(336) 274-7300

2303 Hanford Road
Burlington, NC 27215
(336) 350-7900

BECN.COM

Plan Your Tour

Start planning now by selecting the homes and/or neighborhoods you want to visit or learn more about by utilizing our **Parade of Homes** magazine, website, and mobile app.

Parade Magazine

Within this publication, you will find detailed information on our Fall Parade homes. Entries are organized by sales price. A list of Parade entries sorted by city & neighborhood, as well as open houses and virtual tours only, can be found on the adjoining page. The map on pages 20-21 provides the general vicinity of homes that will be open to tour during the Parade weekends. Some homes are Virtual Tour Only...therefore not available for touring...however you are encouraged to contact the builder to learn about homes they have available.

Each Parade entry page features a rendering of the front elevation; floor plan; special features; driving directions; and a list of the Greensboro Builders Association members who participated in the construction of the home.

Please note that front elevations, floor plans and pricing are as accurate as possible at the time of printing. Pricing is subject to change. Some homes are still under construction...and some may be SOLD and unavailable for viewing. In addition, some are Virtual Tour Only which will be noted on their entry page and on the website.

Open Houses

Parade homes available for touring will be open on **Saturday & Sunday, October 8-9 & 15-16** from **1-5 pm**...admission is free.

Virtual Tours

You can find virtual Matterport tours for all Parade homes on the Greensboro Builders Association website at www.GreensboroBuilders.org. This is a great way to preview homes prior to visiting them on the Parade weekends.



Mobile App

Download our free mobile app – **Greensboro Parade of Homes** - to provide driving directions to Parade homes. Information remains on this app for six months providing contact information for Builders and Realtors.



PARADE OF HOMES

Greensboro Builders Association

Below is a listing of homes on tour throughout **Guilford** and surrounding counties as part of the Fall Parade of Homes.

OPEN HOUSES

City	Neighborhood	Street	Builder	Entry	Price
BROWNS SUMMIT	Wellington	3491 Tyburn Trace	D.R. Horton	3	±\$375,500
GREENSBORO	Avondale	5220 Carol Avenue	Keystone Homes	2	±\$344,284
	The Farm at Cedar Hollow	2009 Bob Jessup Drive	Arden Homes	13	\$729,900
	Kirkwood	2403 Princess Ann Street	Wolfe Homes	27	\$939,500
	Kirkwood	2405 Princess Ann Street	Wolfe Homes	28	\$945,000
	Montrose Village at Grandover	4001 Leven Drive	Garman Homes, LLC	12	\$723,900
	Pleasant Oaks Estates	2513 Dawning Drive	Building Dimensions, Inc.	22	\$874,900
	Woodrose	5710 Woodrose Lane	Keystone Homes	9	\$649,990
KERNERSVILLE	Bentridge Forest	7517 Bentridge Forest Drive	Wisemasterbuilder Design & Custom Homes, LLC	18	\$750,000
LEXINGTON	Dolcetto	122 Dolcetto Avenue	D.R. Horton	1	±\$325,600
MADISON	Providence Glen	130 Providence Trail	Lansink Custom Homes, LLC	4	\$464,900
	Providence Glen	142 Providence Trail	Precept Construction, LLC	5	\$469,900
	Providence Glen	162 Providence Trail	Ray Bullins Construction Co., Inc.	6	\$469,900
OAK RIDGE	Canter Cove	6374 Gumwood Road	Heritage Homes of the Carolinas, LLC	17	\$769,900
	Knights Landing	7401 Harkwood Court	Walraven Signature Homes, LLC	16	\$764,000
	Knights Landing	7402 Harkwood Court	Don Mills Builders, Inc.	15	\$750,000
	Knights Landing	7411 Harkwood Court	R S Dezern Construction	19	\$789,000
	Willow Oaks	5308 Williard Road	Builders MD, LLC	24	\$899,000
	Wolf Ridge	5686 Timber Trace Way	Don Mills Builders, Inc.	25	\$910,000
STOKESDALE	ColdWater	6795 Cold Water Terrace	Building Dimensions, Inc.	26	\$929,900
	ColdWater	6812 Cold Water Terrace	Wolfe Homes	30	\$1,075,000
	North Ridge	8410 Poplar Bluff Drive	Disney Construction Co.	14	\$744,500
SUMMERFIELD	Angels Landing	1106 Haniel Drive	Walraven Signature Homes, LLC	20	\$850,000
	The Farm at Lake Brandt	1109 Hayes Farm Drive	Gingerich Homes, Inc.	31	\$1,095,000
WHITSETT	Whisper Creek at Waterbury	1973 Whisper Lake Drive	Precept Construction, LLC	7	\$489,900

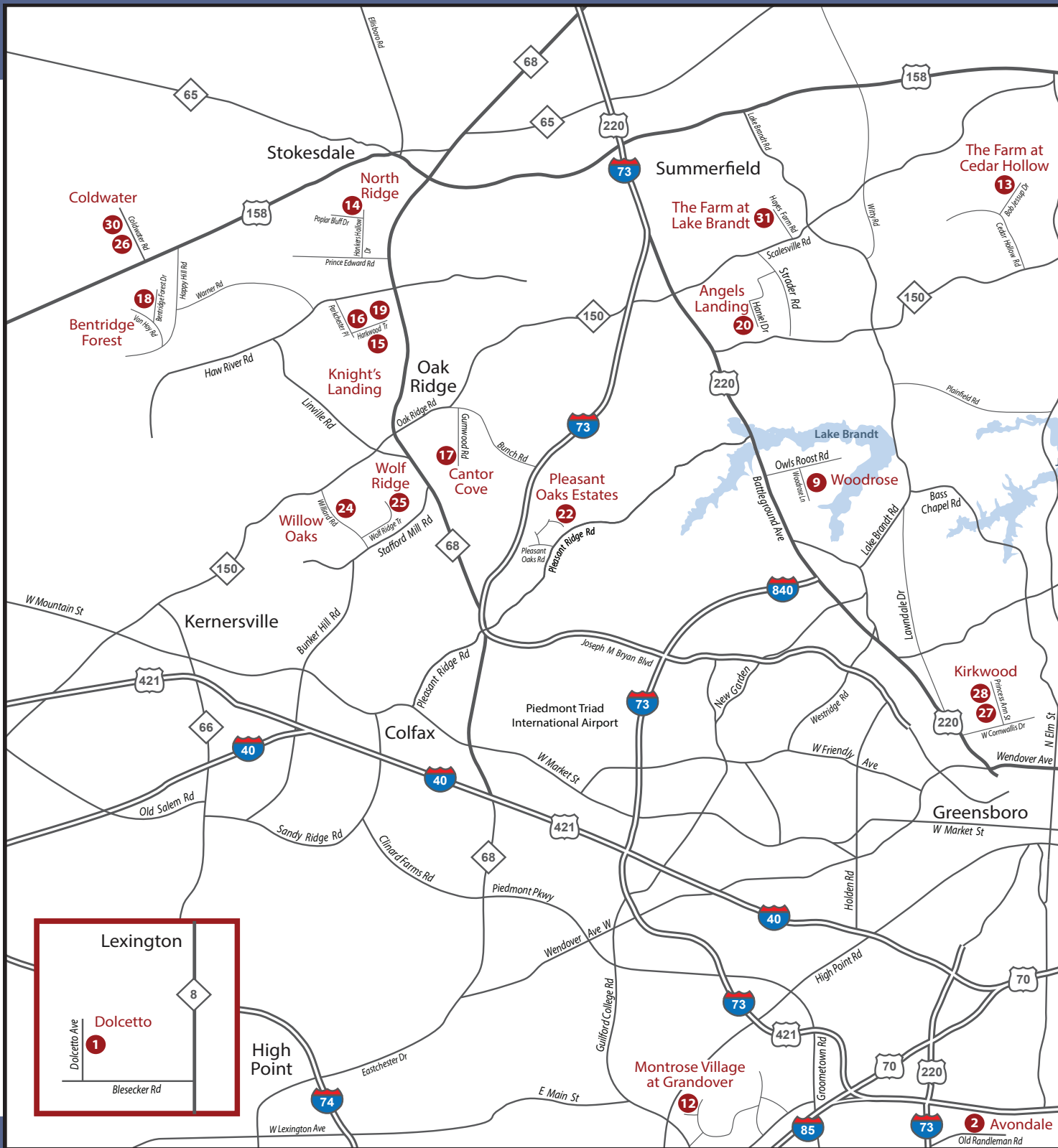
VIRTUAL TOURS ONLY

Builder	Entry	Price
Brian Thompson Homes, LLC	21	±\$859,500
Creative Building Group, Inc.	29	\$964,900
Granville Homes, LLC	8	±\$525,000
Granville Homes, LLC	10	±\$698,960
L & K Builders, Inc.	11	\$699,000
R & K Custom Homes	23	\$897,000

Virtual Tours

for all Parade homes can be found on the
Greensboro Builders Association website
www.GreensboroBuilders.org

Guilford County



Parade Sponsors:





DOWNLOAD THE GREENSBORO PARADE OF HOMES APP TODAY!



Directions

Access turn by turn directions for the homes.

Browse

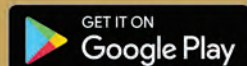
Check out participating home listings for photos and information.

Quick Links

Utilize the side menu to access information about the local community.



Search: Greensboro
Parade of Homes





±\$325,600 | 2644 sq ft
4 Bedrooms, 2.5 Baths

BUILDER

D.R. Horton
Lacey Brothers
864.434.0955
lbrothers@drhorton.com
www.drhorton.com

SPECIAL FEATURES

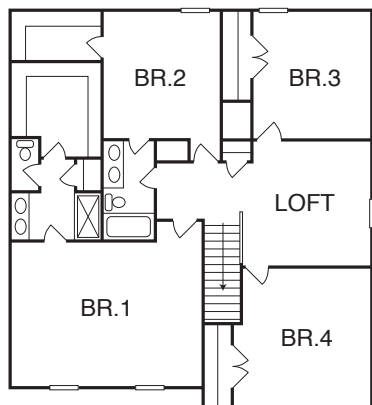
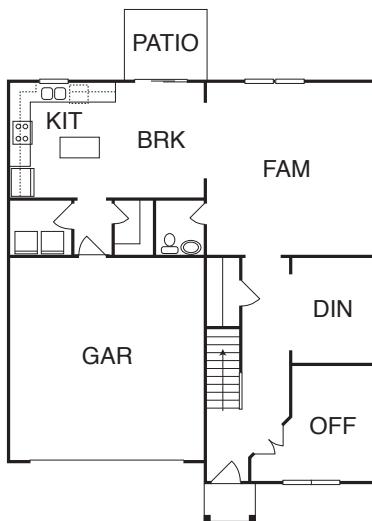
- First floor office
- Center island in kitchen
- Granite countertops in kitchen
- Quartz countertops in bathrooms
- Formal dining room
- Second floor loft

LOCATION

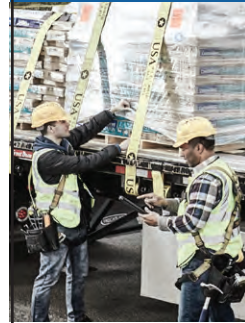
Dolcetto
122 Dolcetto Avenue
Lexington

DIRECTIONS

I-85 South to Exit 96
Merge onto US-64 West
Take the NC-8 North/US-52
exit towards Winston-Salem
Right on Winston Rd/NC-8
Left on Beisecker Road
Right on Dolcetto Avenue



BUILD MORE



Beacon, The Triad's
Preferred Supplier for
Building Materials

- Roofing
- Siding
- Windows
- Decking
- Metal
- Gutters

7614 Boeing Drive
Greensboro, NC 27409
(336) 668-9700

2809-A Thurston Avenue
Greensboro, Nc 27406
(336) 274-7300

4523 Green Point Drive Suite 102
Greensboro, NC 27410
(336) 370-1700

2303 Hanford Road
Burlington, NC 27215
(336) 350-7900

BECN.COM



CSM FLOORING



CSM GREENSBORO & WILMINGTON
HARDWOODS UNLIMITED, WHITSETT
CSMFLOORING.COM

Listening to your needs
and exploring your home
financing options

Opportunities are out there.
Let's connect.



Vicki Estes

Home Mortgage Consultant
336-312-2840
vicki.estes@wellsfargo.com
NMLSR ID 448094



Wells Fargo Home Mortgage is a division of
Wells Fargo Bank, N.A.
© 2022 Wells Fargo Bank, N.A.
NMLSR ID 399801. AS5610980 Expires 03/2023

GBA PARTICIPATING MEMBERS

A Sani-Can Service, Inc.
Amanzi Marble & Granite, LLC
Builders Fireplace & Stone
Builders FirstSource
Door Systems a part of Assa Abloy
Doug Kimrey & Sons Plumbing, Inc.
Ferguson Enterprises, Inc.
GAF
Hardwoods Unlimited
Marsh Kitchen & Bath of Greensboro
McGee Brothers Co., Inc.
Piedmont Natural Gas Co.
Residential Building Specialties, Inc.
The Sherwin-Williams Company
Triangle Brick Co.



±\$344,284 | 2535 sq ft
4 Bedrooms, 2.5 Baths

BUILDER

Keystone Homes
Patrick Dickerson
336.362.2370
pdickerson@gokeystone.com
www.gokeystone.com

SPECIAL FEATURES

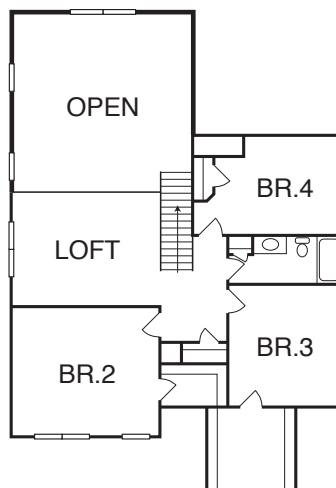
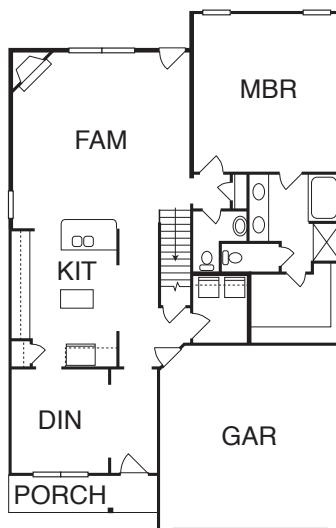
- Primary bedroom on main level
- Luxury master bath layout
- Stone to ceiling fireplace surround
- Luxury vinyl plank flooring on main level
- Open two-story family room

LOCATION

Avondale
5220 Carol Avenue
Greensboro

DIRECTIONS

I-73 South to Exit 124
Right on Old Randleman Road
Right on Sumner Church Road
Left on Carol Avenue





±\$375,500 | 3108 sq ft
4 Bedrooms, 3.5 Baths

BUILDER

D.R. Horton
Lacey Brothers
864.434.0955
lbrothers@drhorton.com
www.drhorton.com

SPECIAL FEATURES

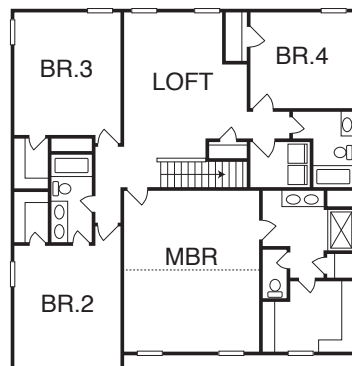
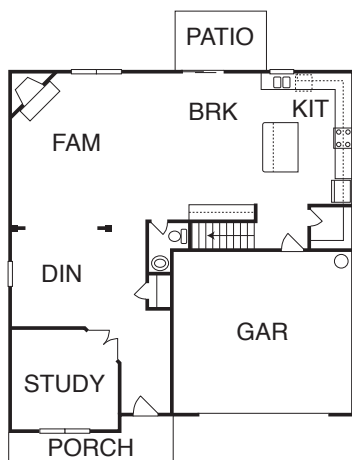
- Center island in kitchen
- Formal dining room
- First floor office
- Fireplace
- Second floor loft

LOCATION

Wellington
3491 Tyburn Trace
Browns Summit

DIRECTIONS

US 29 North
Left on Reedy Fork Parkway
Right on Summit Avenue
Left on NC 150 West
Right on Fairgrove Church Road
Left on Beville Oaks Road
Right on Burfield Pace
Left on Garrick Trace
Right on Exmoor Trace
Left on Tyburn Trace



ABC
Supply Co. inc.

Reid Butler
Sales Representative

2900-B Patterson St.
Greensboro, NC 27407
www.abcsupply.com

Office: 336-855-5030
Fax: 336-855-1954
Toll Free: 800-859-5030
Mobile: 382-6354
E-mail: reid.butler@abcsupply.com

Distribution is our business!

Boise Cascade® (336) 664-1050 | (800) 210-6049

SPRUCE BOARDS	MIRATEC TRIM
PINE BOARDS	FASTENMASTER
OSB	HOOVER FIRE TREATED
ADVANTECH FLOORING	PRESSURE TREATED LVL
ZIP WALL & ROOF	GRACE ROOFING & FLASHING
ARAUOCOPLY SIDING	KLEER PVC TRIM BOARDS
PLYWOOD	PVC COLUMN WRAPS
LAUAN PLYWOOD	DIMENSION LUMBER
ENGINEERED WOOD	STUDS
JAMES HARDIE SIDING	HOMEGUARD
PRODUCTS	HOUSEWRAP
TREX DECKING & RAILING	

home**GUARD** **Boise Cascade®** **Trex**
ENGINEERED WOOD PRODUCTS
ZIPsystem **MIRATEC** **JamesHardie**
BUILDING ENCLOSURES by JELD-WEN NORTH AMERICA'S #1 BRAND OF SIDING

Take Comfort In

Blossman
Propane Gas, Appliance & Service

Cliff Garrick

Fireplaces, Gas Piping, Gas Appliances
LP, Natural Gas Repair and Service

3500 Associate Drive | Greensboro, NC 27405
336-375-8000

GARAGE DOOR PRO

"A Company You Can Trust"

Kelly Gordy
Sales • Service • New & Retrofit
336-501-6025
kg@garagedoorpronc.com

Residential • Commercial • Wood Sections
Installation • Openers • Broken Springs • Cables

www.garagedoorpronc.com

ADVANCING THE FUTURE OF HOMEBUILDING



YOUR TRUSTED SOURCE FOR:

- Windows
- Doors
- Millwork
- Hardware
- Siding
- Decking

VISIT BLDR.COM

Greensboro
336-884-5454

Clemmons
336-712-9910

GBA PARTICIPATING MEMBERS

A Sani-Can Service, Inc.
Allen Tate Smith Marketing – Jason Smith
Bennett Backhoe, Inc.
Blackburn Insurance Service, Inc.
Builders FirstSource
Butler Lighting
Cardinal Millwork & Supply, Inc.
Carolina Custom Surfaces
Dixon Custom Cabinetry, LLC
Ferguson Enterprises, Inc.
Fidelity Bank
General Shale
Got You Floored, Inc.
L & W Supply
Mosaic Tile Company
Piedmont Wholesale Engineered Products
The Sherwin-Williams Company

LANSINK CUSTOM HOMES, LLC

4



\$464,900 | 2203 sq ft
4 Bedrooms, 2 Baths

BUILDER

Lansink Custom Homes, LLC
Kevin Lansink
336.215.0041
lansinkcustomhomes@gmail.com
www.lansinkcustomhomes.com

SPECIAL FEATURES

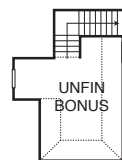
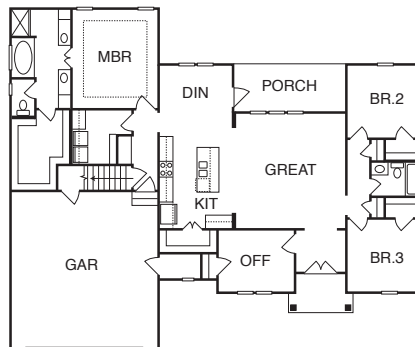
- Open concept
- Entertaining walk-in kitchen
- One floor living
- Custom trim work
- Expansive entertaining tri-fold glass door to covered porch
- Bonus room on second floor

LOCATION

Providence Glen
130 Providence Trail
Madison

DIRECTIONS

Highway 220 North
Right on Gold Hill Road
Left on Providence Trail





\$469,900 | 2237 sq ft
3 Bedrooms, 2.5 Baths

BUILDER

Precept Construction, LLC
Scott Allred
336.215.4725
scott@preceptconstruction.com
www.preceptconstruction.com

SPECIAL FEATURES

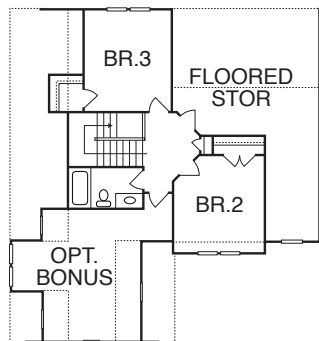
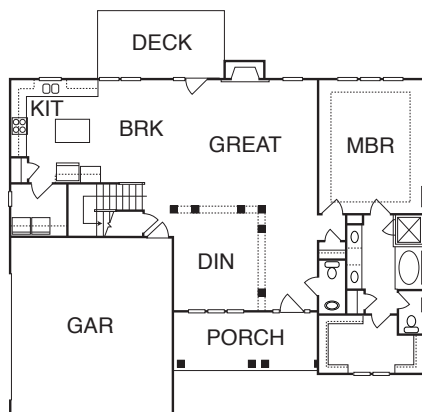
- Open floor plan with master bedroom on main level
- Two additional bedrooms and bonus on upper level
- Kitchen features Marsh Cabinetry with island and Whirlpool stainless appliance package
- Enjoy our serene country setting with low county taxes
- Large walk-in attic storage or use for future expansion
- Conveniently located near I-73, US 220, US 68 and PTI Airport

LOCATION

Providence Glen
142 Providence Trail
Madison

DIRECTIONS

Highway 220 North
Right on Gold Hill Road
Left on Providence Trail



TRUIST

The Genuine.

The Original.



Overhead Door Co of Greensboro

3001 FLAGSTONE DRIVE P.O. BOX 16824
GREENSBORO, NC 27416-0824
1.800.333.DOOR

Dana Coe

Account Executive

Email: dcoe@ohdgboro.com
www.tricitiesgaragedoor.com

WINSTON-SALEM: 336-721-1233
GREENSBORO: 336-373-1481
TOLL FREE: 800-333-DOOR

FAX: 336-273-7428
MOBILE: 336-362-1139

GBA PARTICIPATING MEMBERS

Allen Tate Smith Marketing – Jason Smith
Anderson Plumbing
ARC Electrical Service Company, Inc.
Avery Tile, Inc.
Bennett Backhoe, Inc.
Builders Fireplace & Supply, Inc.
Builders FirstSource
Butler Lighting
FEI Civil Engineers and Land Surveyors
Ferguson Enterprises, Inc.
Greenhaven Landscape Management, Inc.
GSO Contractors, Inc.
Leo's Trim, LLC
LR Wrought & Iron, LLC
Marble Granite World, Inc.
Marsh Kitchens and Bath of Greensboro
Overhead Door Company of Greensboro
Pest Management Systems, Inc.
Piedmont Natural Gas Co.
Piedmont Wholesale Engineered Products
Pine Hall Brick Company
Preston's Concrete Contractors, Inc.
Renn Building Products
Sealing Agents Waterproofing, Inc.
Seasonal Comfort
The Sherwin-Williams Company
TMC Trucking and Grading, LLC
Truist
Weeks Hardwood Flooring



BUILDERS Fireplace and Stone

Builders Fireplace and Stone can assist you in creating environments that help build relationships and achieve connection. We offer a complete line of fireplaces, woodstoves, and firepits. We also have a wide selection of natural and manufactured stone for indoor or outdoor applications.

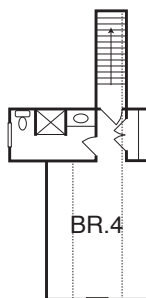
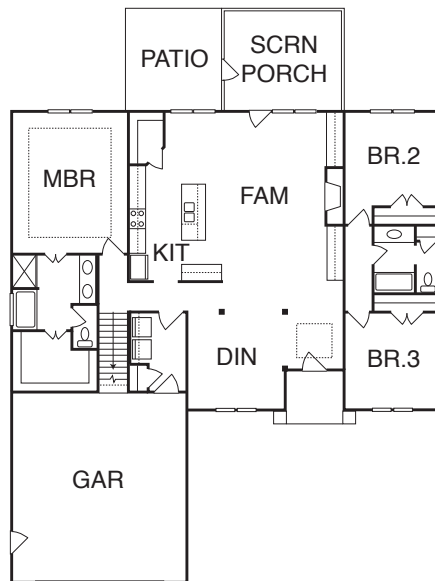
Stop by our NEWLY REMODELED showroom to begin designing your dream!

5323 Surrett Drive, Archdale, NC 27263 | 336-861-5440

www.buildersfireplaceandstone.com

GBA PARTICIPATING MEMBERS

84 Lumber
A & B Portable
A B C Supply
Allen Tate Smith Marketing – Jason Smith
Beacon Building Products
Builders Fireplace & Stone
Builders' Insulation
Butler CPA PA
Butler Lighting
C. Jones Plumbing, Inc.
Cardinal Millwork & Supply, Inc.
Chandler & Schiffman, PA
Colonial Materials, Inc.
Ferguson Enterprises, Inc.
GSO Contractors, Inc.
Gate City Kitchens
Got You Floored, Inc.
Greenhaven Landscape Management, Inc.
Hartley Ready Mix Concrete Mfg, Inc.
HomeTeam Pest Defense
Pine Hall Brick Company
Sealing Agents Waterproofing, Inc.
Studio Tile & Design, Inc.
The Sherwin-Williams Company
Triad Flooring & Bath
Truist



\$469,900 | 2376 sq ft
4 Bedrooms, 3 Baths

BUILDER

Ray Bullins Construction Co., Inc.
Ray Bullins
336.345.3263
Office@RayBullinsConstruction.com
www.RayBullinsConstruction.com

SPECIAL FEATURES

- Three bedrooms on main level
- Open floor plan concept
- Screened rear porch
- Custom amenities
- Private bedroom / office upstairs with private bath

LOCATION

Providence Glen
162 Providence Trail
Madison

DIRECTIONS

Highway 220 North
Right on Gold Hill Road
Left on Providence Trail



\$489,900 | 2599 sq ft
4 Bedrooms, 3 Baths

BUILDER

Precept Construction, LLC
Scott Allred
336.215.4725
scott@preceptconstruction.com
www.preceptconstruction.com

SPECIAL FEATURES

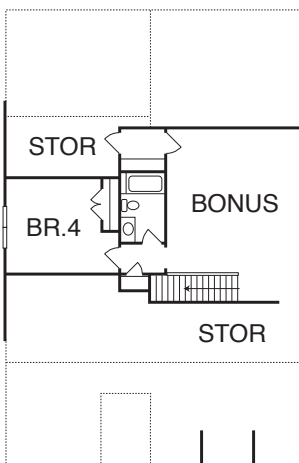
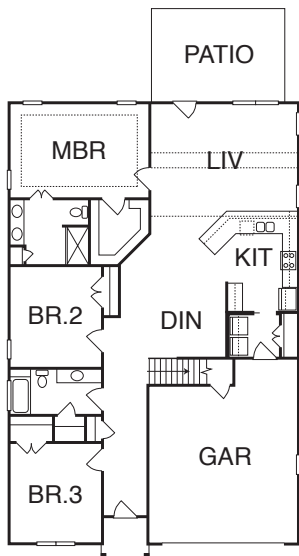
- Exciting new detached townhomes by Certified Aging-in-Place builder
- Main level, low maintenance living featuring four bedrooms, three baths, bonus room and two car garage
- Enjoy our serene country setting with all the amenities of city living without city taxes
- Minutes to Interstates 85 & 40
- Bordering Lake Mackintosh, amenities include a clubhouse and pool, tennis and walking trails

LOCATION

Whisper Creek at Waterbury
1973 Whisper Lake Drive
Whitsett

DIRECTIONS

I-40 East to Exit 135
Left on Rock Creek Dairy Road
Left on Wake Bridge Drive
Right on Whisper Creek Drive
Road changes to Whisper Lake Drive



PMi
PEST MANAGEMENT SYSTEMS INC.

**PEST PROTECTION
FOR YOUR HOME
ALL YEAR LONG**

OFFERING COMPLETE
PEST, TERMITE, MOISTURE, & WILDLIFE CONTROL

CONTACT US TODAY (336)272-4400

WE ALSO SERVICE THE SANDHILLS AREA
(910)215-9700

PESTMGT.COM

GBA PARTICIPATING MEMBERS

Amanzi Marble & Granite, LLC
ARC Electrical Service Co.
Avery Tile, Inc.
Bennett Backhoe, Inc.
Builders Fireplace & Stone
Builders FirstSource
Butler Lighting
Cardinal Concrete Company
Doug Kimrey & Sons Plumbing, Inc.
FEI Civil Engineers and Land Surveyors
Ferguson Enterprises, Inc.
G. Martinez Building Homes, LLC
GSO Contractors, Inc.
Green Visions Landscape, LLC
Greenhaven Landscape Management, Inc.
LR Wrought & Iron, LLC
Overhead Door Company of Greensboro
Pest Management Systems, Inc.
Piedmont Natural Gas Co.
Piedmont Wholesale Engineered Products
Pine Hall Brick Company
Preston's Concrete Contractors, Inc.
Provision Kitchen and Bath
Renn Building Products
Sealing Agents Waterproofing, Inc.
Seasonal Comfort
The Sherwin-Williams Company
TRUIST
Weeks Hardwood Flooring

www.thandc.com



656-0103
Brown Summit, NC

Scott Hicks, Owner
contact@thandc.com

7121 Brown Summit Road Brown Summit, NC 27214

WHOLESALE CERAMIC TILE, INC.



Your Vision. Our Experience. One Masterpiece.

2885 IMMANUEL RD., GREENSBORO, NC 27407
336.292.0130
WWW.WHOLESALECERAMICTILEINC.COM

BUILD THE HOME OF YOUR DREAMS

- Single closing combines your construction and mortgage loans (saves time and money)
- Interest rate is fixed at inception and during the construction period
- Competitive interest rates
- Fixed Rate options up to 30 years
- Interest-only payments during construction (up to 12 months)
- 15/1 and other Adjustable Rate Mortgages available
- And more!

Kim Teeters
NMLS# 81797
TeetersK@fnb-corp.com
336-314-3268

Rebecca Minichello
NMLS# 111809
minichellor@fnb-corp.com
336-613-2958

Maggie Renuart
NMLS# 1614366
renuarm@fnb-corp.com
724-674-1397




FERGUSON
Bath, Kitchen & Lighting Gallery

JENNAIR

BRING YOUR VISION TO US

Any project, any style, any dream—bring your inspiration to Ferguson Bath, Kitchen & Lighting Gallery. Visit build.com/ferguson to schedule your personalized showroom experience today.

YOUR LOCAL SHOWROOM:
GREENSBORO



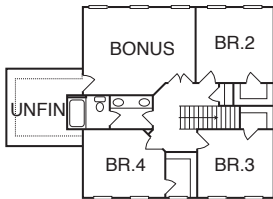
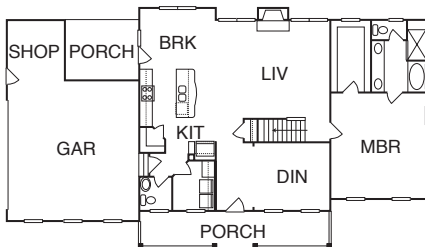
±\$525,000 | 2554 sq ft
4 Bedrooms, 2.5 Baths

BUILDER

Granville Homes, LLC
Will Years
336.202.8514
wyears@mygranvillehome.com
www.mygranvillehome.com

SPECIAL FEATURES

- Separate dining & living room
- Large kitchen island overlooks great room
- Primary bedroom on main floor
- Three additional bedrooms on the second level
- Bonus room with incredible walk-out storage space
- Saxon Plan



VIRTUAL TOUR ONLY
www.GreensboroBuilders.org

Builders®
FirstSource

**ADVANCING
THE FUTURE OF
HOMEBUILDING**



YOUR TRUSTED SOURCE FOR:

- Windows
- Doors
- Millwork
- Hardware
- Siding
- Decking

VISIT BLDR.COM

Greensboro
336-884-5454

Clemmons
336-712-9910

GBA PARTICIPATING MEMBERS

A Sani-Can Service, Inc.
Builders FirstSource
Butler Lighting
Chandler & Schiffman, PA
Doggett Construction Company, Inc.
Door Systems a part of ASSA ABLOY
Fireside Hearth & Home
Florida Tile, Inc.
GAF
Greensboro Kitchen & Bath
Insulating, Inc.
Keller Williams One Realty - Cara Buchanan
Marble Granite World, Inc.
Pest Management Systems, Inc.
Piedmont Natural Gas Co.
Preston's Concrete Contractors, Inc.
Residential Building Specialties, Inc.
Sealing Agents Waterproofing
The Sherwin-Williams Company
Truist
Weeks Hardwood Flooring
Wired South, LLC

**We Use 342
Different
Tools
to Build a
Custom Home**



**Our Buyers
Only Need
One**

"...The daunting task of building a new home was made easy by Bill, Will, Brad & Adam and their teams..."

- The Mills Family

"...Their level of quality and commitment to customer satisfaction is unparalleled. They graciously obliged every request we made, and the overall process was easy..."

-The Duell Family

"...their seamless option selection process are all examples of their passion and care for their homeowners..."

-The Cooke Family



336.442.1021 || 336.202.8514

My
GRANVILLE

HOME.COM



\$649,990 | 3861 sq ft
5 Bedrooms, 3.5 Baths

BUILDER

Keystone Homes
Erin Alston
336.500.1638
ealston@gokeystone.com
www.gokeystone.com

SPECIAL FEATURES

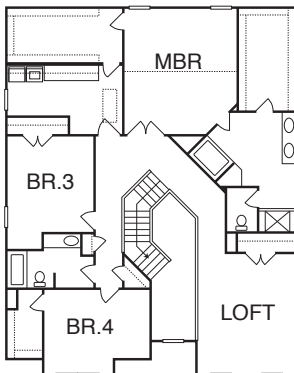
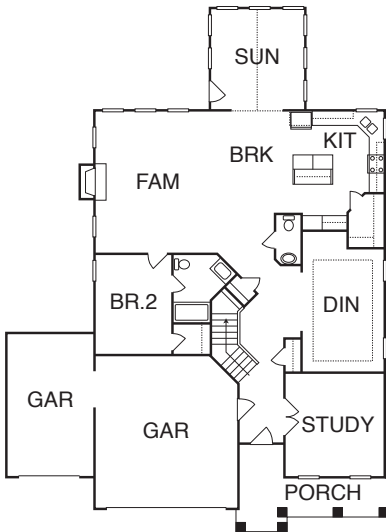
- Spa master bath layout with free standing soaking tub
- Designer ceramic tile shower in master bath
- Chef's kitchen with quartz tops
- Sand and stain hardwood floors on main level
- Stone fireplace to ceiling with raised hearth

LOCATION

Woodrose
5710 Woodrose Lane
Greensboro

DIRECTIONS

Hwy 220 North / Battleground Avenue
Right on Owls Roost Road
Right on Woodrose Lane



Colonial Materials, Inc.

Customer service is our number one priority!



- Wallboard
- Steel studs & track
- Acoustical tiles & grid
- Commercial insulation
- Accessories
- Tools & safety
- Joint treatment
- Insulation

Eric Gonzalez Lewis Taylor
6211 Hunt Road Pleasant Garden, NC • 336.674.1160
www.colonialmaterials.com

License # 32818
Residential

- Heat Pumps • Gas Furnaces
- Air Conditioning • Humidifiers
- **FREE Estimates on New Installations**

Your Partner In Comfort Since 1982
www.gentryair.com
(336) 621-1070

GBA PARTICIPATING MEMBERS

A Sani-Can Service, Inc.
Amanzi Marble & Granite, LLC
Builders Fireplace & Stone
Builders FirstSource
Colonial Materials, Inc.
Door Systems a part of Assa Abloy
Doug Kimrey & Sons Plumbing, Inc.
Ferguson Enterprises, Inc.
GAF
Hardwoods Unlimited
King Electric Co., Inc.
Marsh Kitchen & Bath of Greensboro
McGee Brothers Co., Inc.
Piedmont Natural Gas Co.
Residential Building Specialties, Inc.
Sealing Agents Waterproofing, Inc.
The Sherwin-Williams Company
Triangle Brick Co.



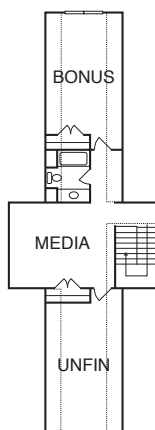
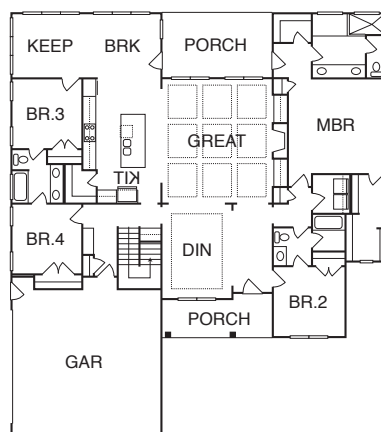
±\$698,960 | 3321 sq ft
4 Bedrooms, 4 Baths

BUILDER

Granville Homes, LLC
Will Yearn
336.202.8514
wyeans@mygranvillehome.com
www.mygranvillehome.com

SPECIAL FEATURES

- Chef's kitchen with oversized island and double wall ovens
- Open floor plan with an abundance of living space
- Bonus room with closet and upstairs full bath
- Upstairs media room
- Covered back porch



VIRTUAL TOUR ONLY
www.GreensboroBuilders.org

PEST PROTECTION FOR YOUR HOME ALL YEAR LONG

OFFERING COMPLETE
PEST, TERMITE, MOISTURE, & WILDLIFE CONTROL

CONTACT US TODAY (336)272-4400

WE ALSO SERVICE THE SANDHILLS AREA
(910)215-9700

PESTMGT.COM

GBA PARTICIPATING MEMBERS

A Sani-Can Service, Inc.
Builders FirstSource
Door Systems a part of ASSA ABLOY
Fireside Hearth & Home
Florida Tile, Inc.
Greensboro Kitchen & Bath
Marble Granite World, Inc.
Pest Management Systems, Inc.
Piedmont Natural Gas Co.
Preston's Concrete Contractors, Inc.
Residential Building Specialties, Inc.
Sealing Agents Waterproofing, Inc.
The Sherwin-Williams Company
Weeks Hardwood Flooring
Wired South, LLC



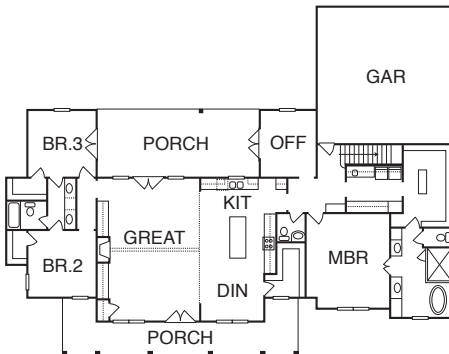
\$699,000 | 3729 sq ft
3 Bedrooms, 2.5 Baths

BUILDER

L & K Builders, Inc.
Kevin Walker
336.688.8461
kwalkerkev@aol.com

SPECIAL FEATURES

- Open floor plan
- Home office
- Jack & Jill bedrooms
- Covered porches
- Two car detached garage



VIRTUAL TOUR ONLY
www.GreensboroBuilders.org



FULL SERVICE LUMBERYARD

Next Day Delivery on
Stock Items | Same Day
Fill-Ins | EWP/Estimate
& Layouts | Truss Design
and Build | Online
Account Access

*Serving the Triad
for 30 years.*

(336) 273-6958

www.thebuildingcenterinc.com

GBA PARTICIPATING MEMBERS

Amanzi Marble & Granite, LLC
Hart Appliance Company
Overhead Door Company of Greensboro
Piedmont Natural Gas Co.
Piedmont Wholesale Engineered Products
The Building Center
Triad Cabinet Company, Inc.



If you're in the Triad area, we have everything you need to build on a strong foundation. From name brand products to manufactured components, we're the one-stop-shop for professional builders.

**747 Old Hargrave Rd.
Lexington, NC 27295
(336) 300-8160**

More than a lumberyard, Carter Lumber is one of the nation's top building materials suppliers. We carry a wide variety of products, ranging from framing, sheathing, trusses, and millwork to windows, doors, and kitchens.

To learn more and to see more of our work, visit carterlumber.com



GBA PARTICIPATING MEMBERS

A Sani-Can Service, Inc.
Allen Tate Smith Marketing - Betty Smith
Beeson Hardware & Lumber Co.
Builders Wholesale Flooring, LLC
Door Systems a part of Assa Abloy
Ferguson Enterprises, Inc.
Fireside Hearth & Home
General Shale
L & W Supply
Leo's Trim, LLC
Piedmont Natural Gas Co.
Pinnacle Contracting Services
Renn Building Products
Sealing Agents Waterproofing, Inc.
Stone Pro
The Sherwin-Williams Company



\$723,900 | 2543 sq ft
4 Bedrooms, 3.5 Baths

BUILDER

Garman Homes, LLC
743.209.6905
SayHello@GarmanHomes.com
www.garmanhomes.com

SPECIAL FEATURES

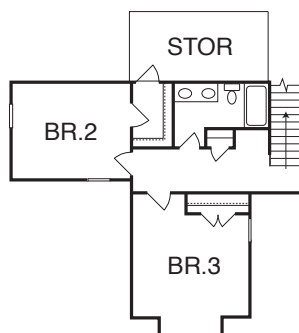
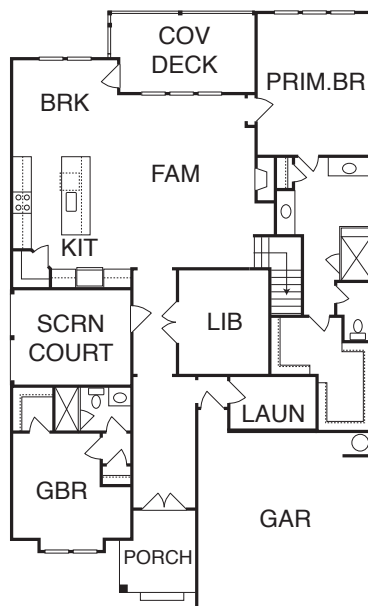
- Chef-inspired gourmet kitchen with expansive kitchen island and tons of natural light
- Private covered courtyard perfect for outdoor entertaining and enjoyment
- Expansive primary suite with spa-like bath and retreat
- Expand your living space onto the first floor
- Covered rear deck
- Joyfully built! Meaningfully different! Crafted by Garman Homes

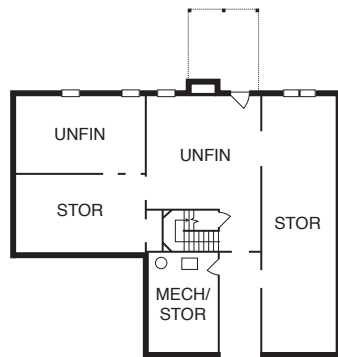
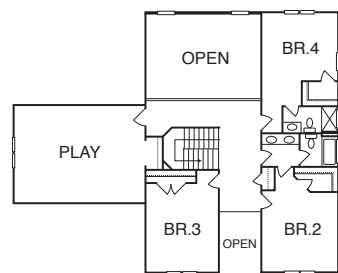
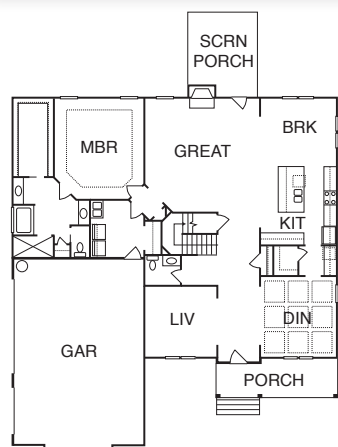
LOCATION

Montrose Village at Grandover
4001 Leven Drive
Greensboro

DIRECTIONS

I-85 Business/US-29/US-70 West
Exit 33 towards I-73 North/Groometown Road
Keep left to follow signs to Grandover Parkway
Right on Groometown Road
Left on Grandover Parkway
Right on Stone Village Road
Left on Dover Park Road
Right on Post Bridge Road
Left on Leven Drive





\$729,900 | 3772 sq ft
4 Bedrooms, 3.5 Baths

BUILDER

Arden Homes
Jeff Cox
336.659.9503
sales@ardenhomes.com
www.ardenhomes.com

SPECIAL FEATURES

- Open concept
- Main-level primary suites
- Soaking tub
- Designer finishes
- Gorgeous white kitchen
- Big center island
- Butler's pantry
- Neighborhood pool

LOCATION

The Farm at Cedar Hollow
2009 Bob Jessup Drive
Greensboro

DIRECTIONS

NC 150 East
Left on Cedar Hollow Road
Right on Bob Jessup Drive

technology simplified



convergence



At Convergence we believe that we are called to serve our clients. From consultation to implementation, you will see this ideal in every member of our team. Our goal is to take you on a journey from technology frustration to "technology simplified"



convergenceusa.com

GBA PARTICIPATING MEMBERS

Amanzi Marble & Granite, LLC
Allen Tate Realtors - DJ McGarrigan
Builders FirstSource
Charles Carter Plumbing
Ferguson Enterprises, Inc.
Fireside Hearth & Home
Pella Windows & Doors
Pine Hall Brick Company
Residential Building Specialties, Inc.
Stone Pro
The Sherwin-Williams Company
Webb Heating & Air Conditioning Co., Inc.

PELLA

WINDOWS & DOORS

OF NORTH CAROLINA & SOUTHWEST VIRGINIA

pellabrand.com/north-carolina
(336) 203-0576

TRADE SALES
REPRESENTATIVES:

EDDIE ROBERTSON
EROBERTSON@PELLADIRECT.COM
(336) 669-0792

DAVID HOLTZ
DHOLTZ@PELLADIRECT.COM
(336) 279-0654



www.cardinalmillwork.com



Inside/Outside Sales (336) 665-9811
Fax: (336) 668-2548

7620 W Market St, Greensboro, NC 27409
www.cardinalmillwork.com

No matter the style, size, or shape...
if you can dream it, we can build it!

GBA PARTICIPATING MEMBERS

Amanzi Marble & Granite, LLC
Allen Tate Smith Marketing – Jason Smith
Beacon Building Products
Butler Lighting
Cardinal Millwork & Supply, Inc.
CSM Flooring
Dixon Custom Cabinetry, LLC
Ferguson Enterprises, Inc.
Mosaic Tile Company
LR Wrought & Iron, LLC
Pella Windows & Doors
Piedmont Natural Gas Co.
Piedmont Wholesale Engineered Products
Pine Hall Brick Company
Progressive Siding, Inc.
Sealing Agents Waterproofing, Inc.
The Building Center
The Sherwin-Williams Company
Truist



\$744,500 | 3150 sq ft
4 Bedrooms, 3 Baths

BUILDER

Disney Construction Co.
Patti Disney
336.643.4219
pdisney01@icloud.com
www.disneycustomhomes.com

SPECIAL FEATURES

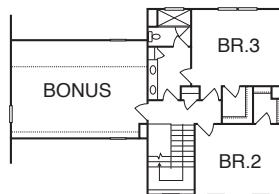
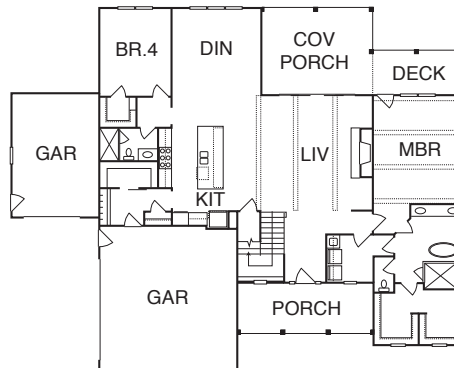
- Spacious floor plan
- 12' wide sliding door to covered porch
- Custom faux beams
- Classic and contemporary come together in finishes
- Retreat to primary suite on main level with spa-like bath
- Lovely guest suite on main floor
- Beautiful private acre lot on cul-de-sac in desirable North Ridge

LOCATION

North Ridge
8410 Poplar Bluff Drive
Stokesdale

DIRECTIONS

Highway 68 North
Continue past Highway 150
approximately 5 miles
Left on Prince Edward Road
Right on Honkers Hollow Drive
Left on Poplar Bluff Drive





\$750,000 | 3525 sq ft
4 Bedrooms, 3 Baths

BUILDER

Don Mills Builders, Inc.
Don Mills
336.362.1777
don@donmillsbuilders.com
www.donmillsbuilders.com

SPECIAL FEATURES

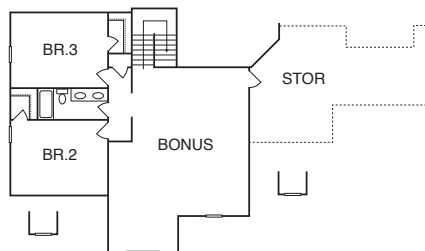
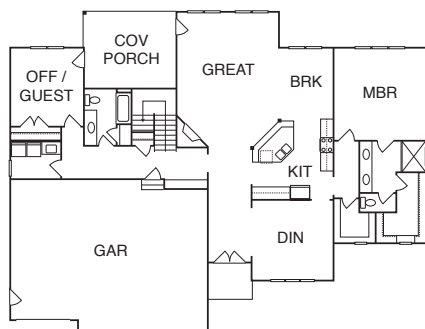
- Location
- Hardwoods throughout
- Covered porch
- Large garage and drive
- Wooded back yard

LOCATION

Knights Landing
7402 Harkwood Court
Oak Ridge

DIRECTIONS

Highway 68 North
Left on Linville Road
Right on Haw River Road
Right on Parkchester Place
Left on Harkwood Court



Adam Kirby
Mortgage Loan Officer
NMLS ID 545555
336-382-3487
adam.kirby@citizensone.com

Mortgages are offered and originated by Citizens Bank, N.A. Citizens One and Citizens One Home Loans® are brand names of Citizens Bank, N.A. (NMLS ID# 433960). All loans are subject to approval. Equal Housing Lender.



www.grancut.com

3516 E M.L.K. Jr Dr, High Point, NC 27260 (336)-887-0906

GBA PARTICIPATING MEMBERS

A & B Portable
Allen Tate Smith Marketing – Jason Smith
Beacon Building Products
Bennett Backhoe, Inc.
Berico Fuels
Builders FirstSource
Builders' Insulation
Butler CPA PA
Butler Lighting
Cardinal Millwork & Supply, Inc.
Chandler & Schiffman, PA
Door Systems a part of Assa Abloy
Ferguson Enterprises, Inc.
Florida Tile, Inc.
Green River Homes Corp
Innovative Kitchens & Baths, Inc.
Integrity Marble and Granite, Inc.
Overbey's Septic Tank, Inc.
Pella Windows & Doors
Piedmont Natural Gas Co.
Piedmont Wholesale Engineered Products
Pine Hall Brick Company
Relation Insurance Services
Sealing Agents Waterproofing
Studio Tile & Design, Inc.
Terminix of Greensboro
The Sherwin-Williams Company
Total Heating & Cooling, Inc.
Truist
Weeks Hardwood Flooring
Whalen Construction Co., Inc.

Berico.com



Propane • HVAC • Gas Logs



CHANDLER
CONCRETE MASONRY HARDSCAPES



GROTTO
HARDSCAPES

MOBILE: 336.266.5983

EMAIL: mark.furr@chandlerconcrete.com

www.chandlerconcrete.com

385 S Swing Road • Greensboro, NC 27409

MARK FURR
Architectural Sales

GBA PARTICIPATING MEMBERS

Allen Tate Smith Marketing - Jason Smith
Amanzi Marble & Granite, LLC
Builders FirstSource
Builder's Insulation
Carpet One By Henry
Dixon Custom Cabinetry, LLC
Door Systems a part of ASSA ABLOY
Ferguson Enterprises, Inc.
Fireside Hearth & Home
Florida Tile, Inc.
Hartley Ready Mix Concrete Mfg., Inc.
Piedmont Wholesale Engineered Products
Pine Hall Brick Company

WALRAVEN SIGNATURE HOMES, LLC

16



\$764,000 | 3035 sq ft
4 Bedrooms, 3.5 Baths

BUILDER

Walraven Signature Homes, LLC
Matt Walraven
336.442.8657
matt@walravensignaturehomes.com
www.walravensignaturehomes.com

SPECIAL FEATURES

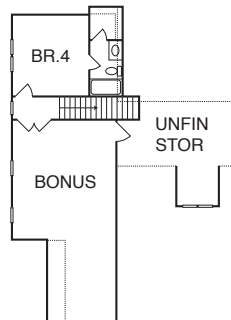
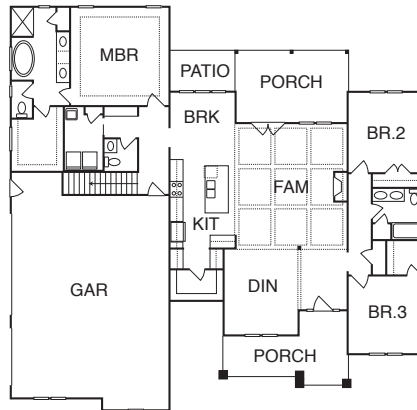
- Open floor plan
- Three bedrooms downstairs
- One bedroom and a bonus room upstairs
- Free standing tub
- Oversized pantry
- Screened porch
- Three-car garage

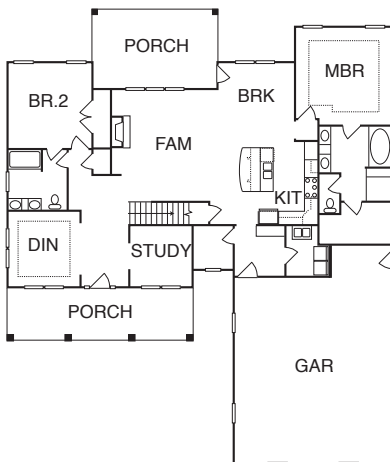
LOCATION

Knights Landing
7401 Harkwood Court
Oak Ridge

DIRECTIONS

Highway 68 North
Left on Linville Road
Right on Haw River Road
Right on Parkchester Place
Left on Harkwood Court





\$769,900 | 3133 sq ft
4 Bedrooms, 3 Baths

BUILDER

Heritage Homes of the Carolinas, LLC
Nathan Sawyer
336.587.0297
nsawyer@hhotc.build
www.HHOTC.build

SPECIAL FEATURES

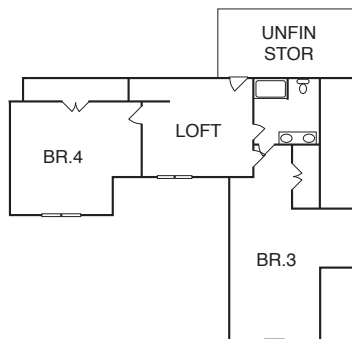
- Gourmet chef's kitchen
- Low maintenance exterior...all brick
- Rocking chair front porch
- Open floor plan
- Huge bonus room

LOCATION

Canter Cove
6374 Gumwood Road
Oak Ridge

DIRECTIONS

Highway 68 North
Right on Highway 150/Oak Ridge Road
Right on Bunch Road
Right on Gumwood Road



Shop Home & Lighting Under One Roof



KING
ELECTRIC CO., INC.



808 Chapel Hill Road | Burlington, NC 27215
336.226.8889 | www.kingelectric-co.com

Serving Burlington & Surrounding Areas For 100 Years!

GBA PARTICIPATING MEMBERS

84 Lumber
A B C Supply
Adams Products Company Oldcastle
Allen Tate Smith Marketing – Betty Smith
Beacon Building Products
Door Systems a part of Assa Abloy
Ferguson Enterprises, Inc.
King Electric Co., Inc.
L & W Supply
M & J Quality Roofing Co., Inc.
Marble Granite World, Inc.
Marsh Kitchen & Bath of Greensboro
Piedmont Natural Gas Co.
Pinnacle Contracting Services
Renn Building Products
Scott Stone, Inc.
Talbert Building Supply
Terminix of Greensboro
The Building Center
The Sherwin-Williams Company



FULL SERVICE LUMBERYARD

Next Day Delivery on
Stock Items | Same Day
Fill-Ins | EWP/Estimate
& Layouts | Truss Design
and Build | Online
Account Access

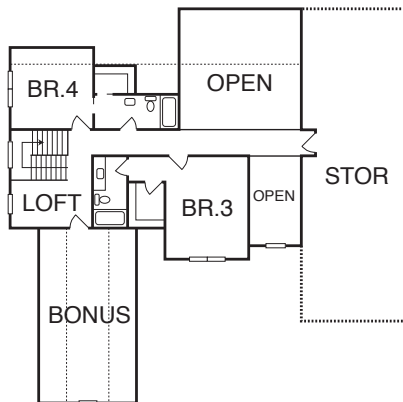
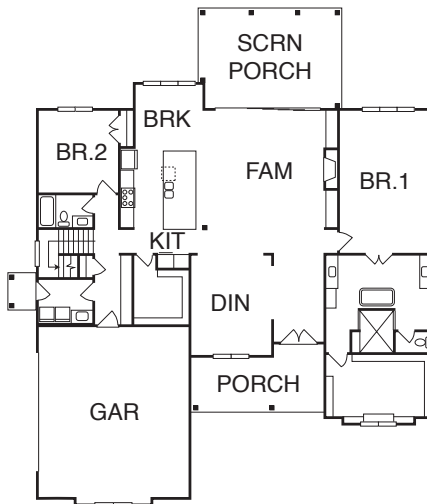
*Serving the Triad
for 30 years.*

(336) 273-6958

www.thebuildingcenterinc.com

GBA PARTICIPATING MEMBERS

13 Thirteen Design & Planning
A B C Supply
Allen Tate Realtors - Richelle Marshall
Ferguson Enterprises, Inc.
Harrell's Waterproofing, Inc.
Marble Granite World, Inc.
Piedmont Natural Gas Co.
Piedmont Wholesale Engineered Products
Provision Kitchen and Bath
The Building Center
The Sherwin-Williams Company



\$750,000 | 3600 sq ft
4 Bedrooms, 4 Baths

BUILDER

Wisemasterbuilder Design & Custom
Homes, LLC
Walt Wooten
336.501.5578
management@wdcustomhomes.com
www.wdcustomhomes.com

SPECIAL FEATURES

- Designed from the inside out with functionality in mind...cohesive throughout the entire home
- Master bathroom design
- Floor to ceiling fireplace
- Accent wall on staircase
- Energy efficient and updated technology throughout the home

LOCATION

Bentridge Forest
7517 Bentridge Forest Drive
Kernersville

DIRECTIONS

Highway 68 North
Left on Haw River Road
Right on Warner Road
Left on Happy Hill Road
Right on Van Hov Road
Right on Bentridge Forest Drive



\$789,000 | 3525 sq ft
4 Bedrooms, 3 Baths

BUILDER

R S Dezern Construction
Randy Dezern
336.420.8555
rsdezernconstruction@gmail.com

SPECIAL FEATURES

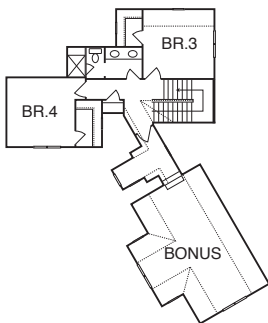
- Chef's kitchen features a large island and nearby pantry
- Breakfast room and separate dining room
- Primary bedroom on main level
- Large covered porch
- Angled courtyard garage
- Community pool and bathhouse

LOCATION

Knights Landing
7411 Harkwood Court
Oak Ridge

DIRECTIONS

Highway 68 North
Left on Linville Road
Right on Haw River Road
Right on Parkchester Place
Left on Harkwood Court



LAURA  REDD
INTERIORS



336.508.3016
reddinteriors.com

GBA PARTICIPATING MEMBERS

Allen Tate Smith Marketing - Jason Smith
Builders FirstSource
Builders' Insulation
Butler Lighting
Carolina Custom Surfaces
Colonial Materials, Inc.
Ferguson Enterprises, Inc.
Fireside Hearth & Home
Florida Tile, Inc.
Mac Garage Door Company, Inc.
Piedmont Natural Gas Co.
Sealing Agents Waterproofing, Inc.
The Sherwin Williams Company
Truist

VISIT OUR
SHOWROOM
TODAY!



120 south walnut circle
greensboro, nc 27409

(336) 851-2622

floridatile
www.floridatile.com

GBA PARTICIPATING MEMBERS

Allen Tate Smith Marketing - Jason Smith
Amanzi Marble & Granite, LLC
Builders FirstSource
Builders' Insulation
Carpet One By Henry
Dixon Custom Cabinetry, LLC
Door Systems a part of ASSA ABLOY
Ferguson Enterprises, Inc.
Fireside Hearth & Home
Florida Tile, Inc.
Hartley Ready Mix Concrete Mfg, Inc.
Piedmont Wholesale Engineered Products
Pine Hall Brick Company

WALRAVEN SIGNATURE HOMES, LLC

20



\$850,000 | 3544 sq ft
4 Bedrooms, 4.5 Baths

BUILDER

Walraven Signature Homes, LLC
Matt Walraven
336.442.8657
matt@walravensignaturehomes.com
www.walravensignaturehomes.com

SPECIAL FEATURES

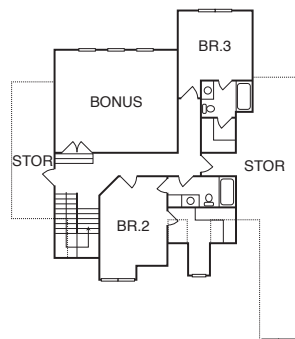
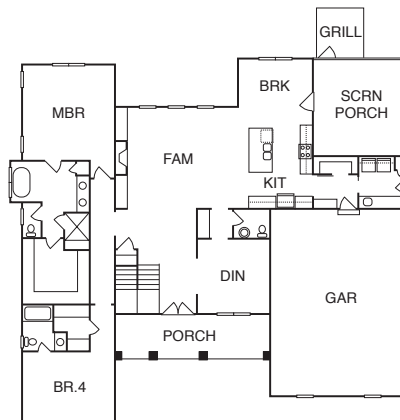
- Master suite and guest bedroom on first floor
- Elegant master bathroom with a huge walk-in closet
- Butler's Pantry
- Screened porch
- Summerfield Elementary and Northern Middle & High Schools

LOCATION

Angels Landing
1106 Haniel Drive
Summerfield

DIRECTIONS

Battleground Avenue North
(Highway 220 North)
Right on Scalesville Road
Right on Strader Road
Right on Angels Landing
Left on Haniel Drive





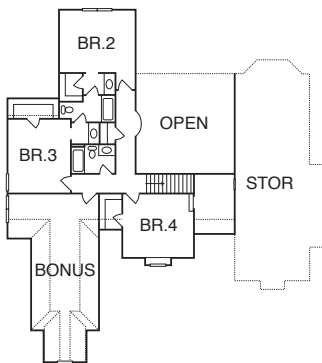
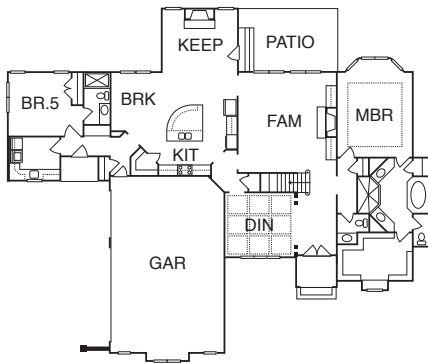
±\$859,500 | 4192 sq ft
4 Bedrooms, 4 Baths

BUILDER

Brian Thompson Homes, LLC
Brian Thompson
336.575.4797
brianthompsonhomes@gmail.com
www.brianthompsonhomes.com

SPECIAL FEATURES

- Large kitchen with keeping room
- Extensive trim work
- Vaulted great room with cedar beams
- Large bonus room and exercise room upstairs
- Large patio with fire pit



VIRTUAL TOUR ONLY
www.GreensboroBuilders.org

Welcome
to our
very best.

We feature the premier product line from Merillat Cabinetry, Merillat Masterpiece®. With its exceptional selection, superior construction and a Lifetime Limited Warranty, we provide beauty that lasts a lifetime. Let's make it beautiful.



Door Style: Hammond
Wood Type: Maple
Color: Greylot

www.carolinakitchen.com

Showroom hours:
Mon thru Fri 8:00am - 5:00pm

Carolina Kitchen & Bath
2324 Battleground Ave
Greensboro NC 27408
(336) 545-9995

**Carolina
Kitchen & Bath**

Merillat
We are America's Cabinetmaker.

GBA PARTICIPATING MEMBERS

Amanzi Marble & Granite, LLC
Beacon Building Products
Beeson Hardware & Lumber Co.
Bennett Backhoe, Inc.
Builders Fireplace & Stone
Builders' Insulation
Butler Lighting
Cardinal Millwork & Supply, Inc.
Carpet One By Henry
Chandler & Schiffman, PA
Colonial Materials, Inc.
Ferguson Enterprises, Inc.
Gentry Air, Inc.
Mac Garage Door Company, Inc.
Piedmont Natural Gas Co.
Pine Hall Brick Company
Provision Kitchen and Bath
Renn Building Products
Residential Building Specialties, Inc.
The Sherwin-Williams Company

Shop Home & Lighting Under One Roof



KING
ELECTRIC CO., INC.



808 Chapel Hill Road | Burlington, NC 27215
336.226.8889 | www.kingelectric-co.com

Serving Burlington & Surrounding Areas For 100 Years!

GBA PARTICIPATING MEMBERS

A Sani-Can Service, Inc.
Adams Products Company Oldcastle
Amanzi Marble & Granite, LLC
Beacon Building Products
Berkshire Hathaway HomeServices Yost
& Little Realty - Jake Letterman
Builders FirstSource
Builders' Insulation
C. Jones Plumbing, Inc.
Cardinal Millwork & Supply, Inc.
Colonial Materials, Inc.
Ferguson Enterprises, Inc.
Fireside Hearth & Home
Garage Door Pro
Hartley Ready Mix Concrete Mfg, Inc.
HomeTeam Pest Defense
James Hardie Building Products
King Electric Co., Inc.
Lenz Designs
Piedmont Wholesale Engineered Products
Pine Hall Brick Company
Progressive Siding, Inc.
Provision Kitchen and Bath
S. Salazar Framing, Inc.
Sealing Agents Waterproofing, Inc.
Stegall & Clifford, PLLC
The Sherwin-Williams Company
Total Heating & Cooling, Inc.
Triad Flooring Group, LLC
Truist
Vanir Installed Sales
Ward Bros., LLC

BUILDING DIMENSIONS, INC.

22



\$874,900 | 3508 sq ft
4 Bedrooms, 4 Baths

BUILDER

Building Dimensions, Inc.
Susan & Paul Mowery
336.215.7958
BDI@BuildingDimensionsNC.com
www.BuildingDimensionsNC.com



SPECIAL FEATURES

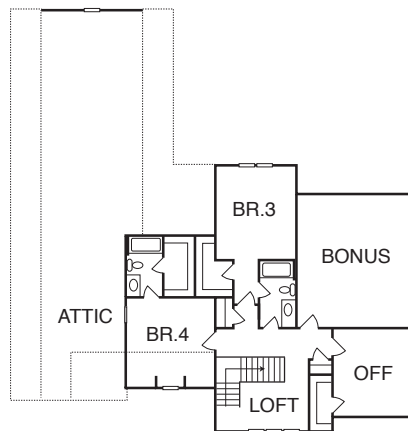
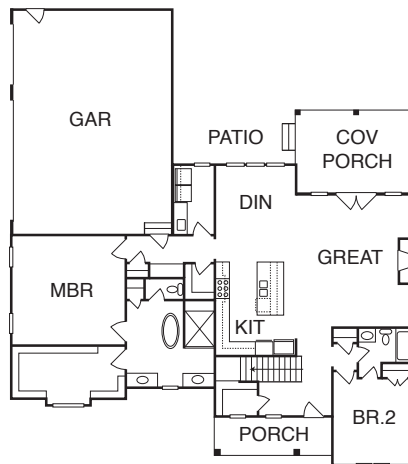
- Almost an acre lot boasting beautiful trees
- Split bedroom floor plan offers privacy and seclusion for owners
- Entry foyer introduces an impressive great room/dining room/kitchen combo with loads of space for get-togethers
- Primary bedroom and guest bedroom on the main level
- Beautiful archways on the main level complimented by custom millwork

LOCATION

Pleasant Oaks Estates
2513 Dawning Drive
Greensboro

DIRECTIONS

Highway 68 North
Right on Pleasant Ridge Road
Left on Pleasant Oaks Drive
Right on Little Oak Drive
Right on Acorn Forest Court
Right on Dawning Drive





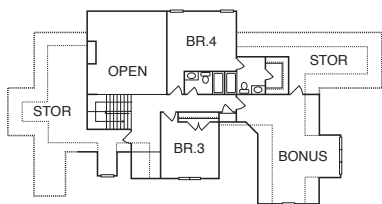
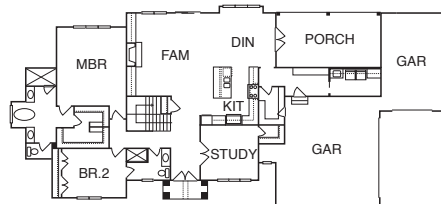
\$897,000 | 3590 sq ft
4 Bedrooms, 4 Baths

BUILDER

R & K Custom Homes
Rich Dumas
336.382.0728
Kathy@RandKCustomHomes.net
www.RandKCustomHomes.net

SPECIAL FEATURES

- Four bedroom farm house in cul-de-sac
- Beautiful screen porch overlooking backyard
- Custom kitchen
- Large walk-in pantry
- Master, guest bedroom and office on main level
- Two bedroom, two baths and bonus room on second level



VIRTUAL TOUR ONLY

www.GreensboroBuilders.org

Citizens One
Home Loans®



Adam Kirby
Mortgage Loan Officer
NMLS ID 545555
336-382-3487
adam.kirby@citizensone.com

Mortgages are offered and originated by Citizens Bank, N.A. Citizens One and Citizens One Home Loans® are brand names of Citizens Bank, N.A. (NMLS ID# 433960). All loans are subject to approval. Equal Housing Lender.

Get 4 More

MAC
Garage Door Company
INC

"No One Hangs With More Pride"

www.macdoor.com
336.731.7849

Residential, Commercial
& Industrial Solutions

200 Hinkle Road
Lexington, NC 27292

GBA PARTICIPATING MEMBERS

A Sani-Can Service, Inc.
Adams Products Company Oldcastle
Allen Tate Smith Marketing - Jason Smith
Amanzi Marble & Granite, LLC
Beacon Building Supply
Bennett Backhoe, Inc.
Blackburn Insurance Service, Inc.
Blossman Gas, Inc.
Builders' Insulation
Burt Electric Co., Inc.
Butler CPA PA
Butler Lighting
Ferguson Enterprises, Inc.
Four Seasons Concrete, Inc.
Got You Floored, Inc.
HomeTeam Pest Defense
Horizon Forest Products
Jesus A. Aguilar Masonry
Mac Garage Door Company, Inc.
Pessolano Plumbing, Inc.
Piedmont Natural Gas Co
Piedmont Wholesale Engineered Products
Pine Hall Brick Company
Progressive Siding, Inc.
Provision Kitchen and Bath
Renn & Renn Construction Co.
Residential Building Specialties, Inc.
Studio Tile & Design, Inc.
The Building Center
The Sherwin-Williams Company
Truist
Wade's Heating & Air Conditioning
Wired South, LLC



Complete Portable Restroom Services
Construction Sites • Private Parties • Corporate Events

Cathy Huffman

Office: 336.375.5001
Toll Free: 1.866.736.8564
Fax: 336.375.4454
www.asanican.com
info@asanican.com

2316 JOE BROWN ROAD • GREENSBORO, NC 27407



Blackburn Insurance
Service, Inc.

Joey Blackburn

Bus. (336) 643-7703
www.blackburninsurance.net

8612 Hwy. 158, P. O. Box 97
Stokesdale, N.C. 27357

Take Comfort In



Cliff Garrick

Fireplaces, Gas Piping, Gas Appliances
LP, Natural Gas Repair and Service

3500 Associate Drive | Greensboro, NC 27405
336-375-8000



Borum, Wade and Associates, P.A.

621 Eugene Court, Suite 100
Greensboro, NC 27401-2711
PO Box 21882
Greensboro, NC 27420-1882
Phone:
336.275.0471
Fax:
336.275.3719

www.borum-wade.com



Central Carolina
Concrete, L.L.C.

BILLY BUCHANAN

296 S. Edwardia Drive
Greensboro, NC 27409
b.buchanan@centralcarolinaconcrete.com
Ph 336-315-0777
Fax 336-315-0073
Cell 336-944-1976

Commercial and Residential Waterproofing



Greg Harrell

President
harrells@triad.rr.com

MOBILE: 336.382.0778
OFFICE: 336.643.6969
FAX: 336.643.8769

7103 US 158 • Stocksdale, NC 27357-7103



Blinds • Shades • Shutters • Drapes • Motorization

336-383-1715

www.budgetblinds.com/northgreensboro

- Residential and Commercial
- Free Consultation
- Trusted by Triad builders for over 17 years
- Unmatched warranties and customer service
- Fast Turn Around (installed before closing)
- Locally owned and operated with national buying power

Come see our showroom at

7341 W Friendly Ave • Suite E • Greensboro, NC 27410

Butler
LIGHTING

Come See Our New
American Made Inventory



High Point | Greensboro
336.889.2344 | 336.412.2521

www.Butlerlightingusa.com

wired south
creating smart environments

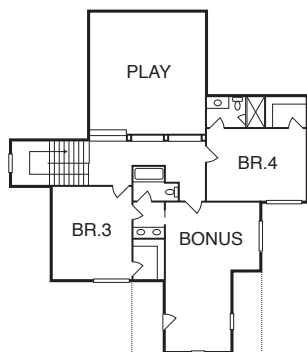
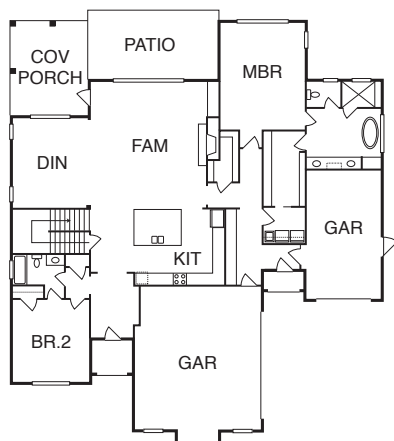
SIMPLIFYING TECHNOLOGY

Offering the latest in Residential and Commercial consumer electronics, Wired South is one of North Carolina's foremost systems integration companies. From concept and design, to installation and maintenance – we are proud to be the go-to organization for builder partners and their customers.

RESIDENTIAL & COMMERCIAL

- Home Automation
- Fire Alarms
- Climate Control
- Audio & Video
- Business Integration
- Media Rooms
- Security & Surveillance
- Lighting Control
- Access Control
- Shade Control

336.252.2540



\$899,000 | 4000 sq ft
4 Bedrooms, 4 Baths

BUILDER

Builders MD, LLC
David Flanders
336.560.6023
david@buildersmd.com
www.buildersmd.com

SPECIAL FEATURES

- Open floor plan
- Custom trim details
- Open space view
- Modern design
- Master and guest bedroom on first floor

LOCATION

Willow Oaks
5308 Williard Road
Oak Ridge

DIRECTIONS

Highway 68 North
Left on Linville Road
Left on Highway 150
Left on Williard Road



CSM FLOORING



CSM GREENSBORO & WILMINGTON
HARDWOODS UNLIMITED, WHITSETT
CSMFLOORING.COM

GBA PARTICIPATING MEMBERS

A B C Supply
Bennett Backhoe, Inc.
Berkshire Hathaway HomeServices Yost
& Little Realty - Amy Foy
Builders' Insulation
Butler Lighting
Colonial Materials, Inc.
CSM Flooring
Ferguson Enterprises, Inc.
Jose Sanchez Concrete & Masonry
Marble Granite World, Inc.
Pella Windows & Doors
Piedmont Wholesale Engineered Products
Pine Hall Brick Company
Provision Kitchen and Bath
Renn & Renn Construction Co.
The Building Center
The Sherwin-Williams Company

VISIT OUR
SHOWROOM
TODAY!



120 south walnut circle
greensboro, nc 27409

(336) 851-2622

floridatile
www.floridatile.com

GBA PARTICIPATING MEMBERS

A & B Portable
Berkshire Hathaway HomeServices Yost
& Little Realty - Nancy Hess
Beacon Building Products
Bennett Backhoe, Inc.
Berico Fuels
Builders FirstSource
Builders' Insulation
Butler CPA PA
Butler Lighting
Cardinal Millwork & Supply, Inc.
Chandler & Schiffman, PA
Door Systems a part of Assa Abloy
Ferguson Enterprises, Inc.
Florida Tile, Inc.
Green River Homes Corp
Innovative Kitchens & Baths, Inc.
Integrity Marble and Granite, Inc.
Overbey's Septic Tank, Inc.
Pella Windows & Doors
Piedmont Natural Gas Co.
Piedmont Wholesale Engineered Products
Pine Hall Brick Company
Relation Insurance Services
Sealing Agents Waterproofing
Studio Tile & Design, Inc.
Terminix of Greensboro
The Sherwin-Williams Company
Total Heating & Cooling, Inc.
Truist
Weeks Hardwood Flooring
Whalen Construction Co., Inc.

DON MILLS BUILDERS, INC.

25



\$910,000 | ±3900 sq ft
4 Bedrooms, 4 Baths

BUILDER

Don Mills Builders, Inc.
Don Mills
336.362.1777
don@donmillsbuilders.com
www.donmillsbuilders.com

SPECIAL FEATURES

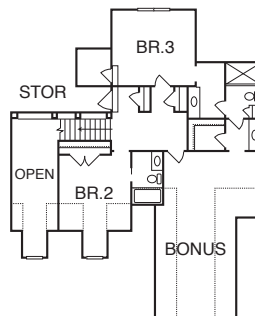
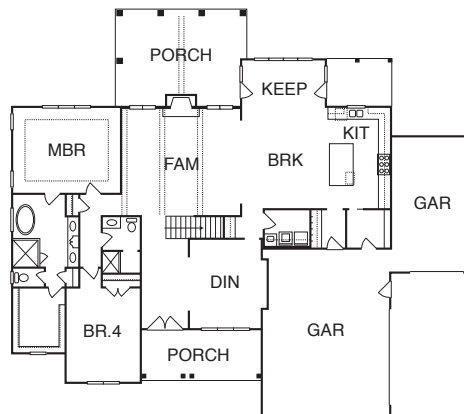
- Open floor plan
- EZ View porch
- Trim package
- Lot will accommodate a pool

LOCATION

Wolf Ridge
5686 Timber Trace Way
Oak Ridge

DIRECTIONS

Highway 68 North
Left on Highway 150
Left on Willard Road
Left on Wolf Ridge Trail
Left on Timber Trace Way





\$929,900 | 3518 sq ft
4 Bedrooms, 4 Baths

BUILDER

Building Dimensions, Inc.
Susan & Paul Mowery
336.215.7958
BDI@BuildingDimensionsNC.com
www.BuildingDimensionsNC.com



SPECIAL FEATURES

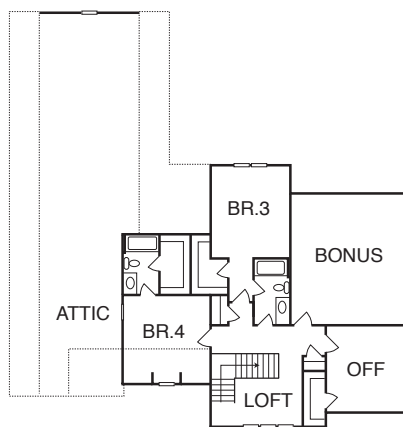
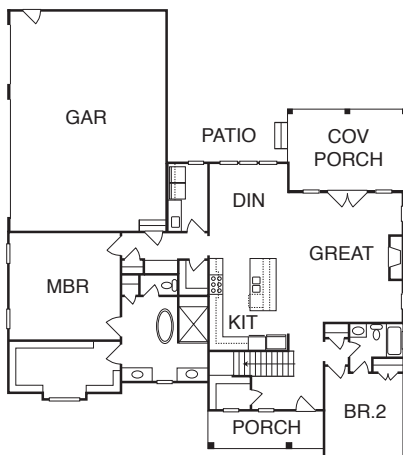
- Welcoming arched front door leads to stunning architectural details
- Trending visual consistency throughout the home
- Primary bedroom and guest bedroom on the main level
- Owner's entry/drop zone area
- Screened porch with clerestory window providing extra natural light

LOCATION

Coldwater
6795 Cold Water Terrace
Stokesdale

DIRECTIONS

Hwy 68 North to Stokesdale
Left at Stokesdale light onto US-158 West
Left to stay on US-158 West
Right on Coldwater Road
Left on Cold Water Terrace



Triad Flooring and Bath

Experts In Flooring and Design



Triad Flooring and Bath is a team comprised of accomplished professionals who have over 15 years of experience in the flooring industry. We have the skillset and the knowledge to handle even the most challenging projects.



TRIAD FLOORING
GROUP

GBA PARTICIPATING MEMBERS

A Sani-Can Service, Inc.
Adams Products Company Oldcastle
Amanzi Marble & Granite, LLC
Beacon Building Products
Builders FirstSource
Builders' Insulation
C. Jones Plumbing, Inc.
Cardinal Millwork & Supply, Inc.
Colonial Materials, Inc.
Ferguson Enterprises, Inc.
Fireside Hearth & Home
Garage Door Pro
Hartley Ready Mix Concrete Mfg, Inc.
HomeTeam Pest Defense
King Electric Co., Inc.
Lenz Designs
Piedmont Wholesale Engineered Products
Pine Hall Brick Company
Progressive Siding, Inc.
Provision Kitchen and Bath
S. Salazar Framing, Inc.
Sealing Agents Waterproofing, Inc.
Stegall & Clifford, PLLC
The Sherwin-Williams Company
Total Heating & Cooling, Inc.
Triad Flooring Group, LLC
Truist
Vanir Installed Sales
Ward Bros., LLC

VISIT OUR
SHOWROOM
TODAY!

WOLFE HOMES

27

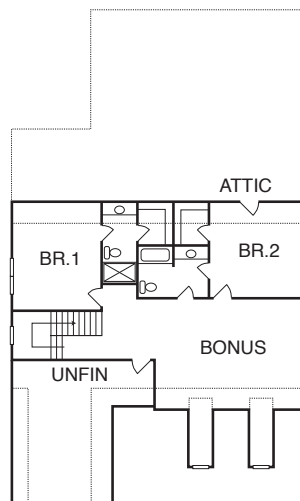
120 south walnut circle
greensboro, nc 27409

(336) 851-2622

floridatile
www.floridatile.com

GBA PARTICIPATING MEMBERS

A Sani-Can Service, Inc.
A B C Supply
AC Gutters, Inc.
Avery Tile, Inc.
Beeson Hardware & Lumber Co.
Borum, Wade & Associates, PA
Builders Fireplace & Stone
Builders' Insulation
Carpet One By Henry
Colonial Materials, Inc.
Ferguson Enterprises, Inc.
Florida Tile, Inc.
HomeTeam Pest Defense
Ivey Lane, Inc.
King Electric Co., Inc.
Pella Windows & Doors
Piedmont Natural Gas Co.
Piedmont Wholesale Engineered Products
Pine Hall Brick Company
Scott Stone, Inc.
Smith Phillips Building Supply
The Sherwin-Williams Company
Truist



\$939,500 | 3822 sq ft
4 Bedrooms, 4.5 Baths

BUILDER

Wolfe Homes
Will Wolfe
(336) 299-2969
will.wolfe@wolfehomes.com
www.wolfehomes.com

SPECIAL FEATURES

- Master on main
- Spacious walk-in pantry
- Study
- Bonus room
- Walk-in attic storage

LOCATION

Kirkwood
2403 Princess Ann Street
Greensboro

DIRECTIONS

I 40 West to Wendover Avenue East
Right on Wendover Avenue East
Left on Holden Road
Right on Cornwallis Drive
Left on Princess Ann Street



UNDER CONSTRUCTION

\$945,000 | 3844 sq ft
4 Bedrooms, 4.5 Baths

BUILDER

Wolfe Homes
Will Wolfe
(336) 299-2969
will.wolfe@wolfehomes.com
www.wolfehomes.com

SPECIAL FEATURES

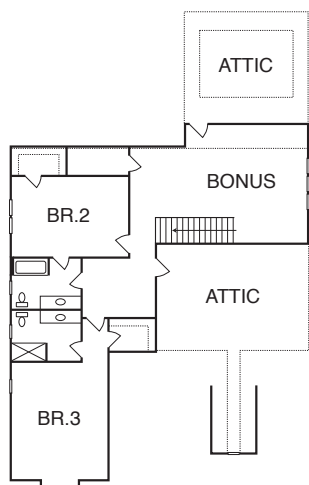
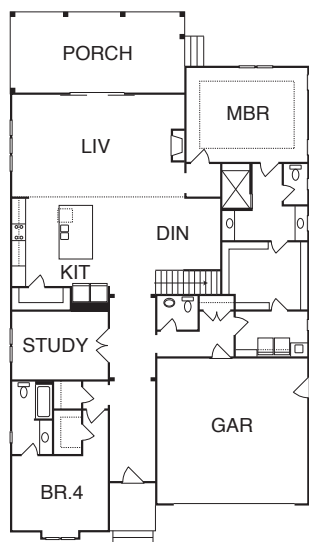
- Master on main
- Vaulted ceiling in living room with beams
- Hardwoods throughout first floor
- 9' ceilings first and second floors
- Covered outdoor living area

LOCATION

Kirkwood
2405 Princess Ann Street
Greensboro

DIRECTIONS

I 40 West to Wendover Avenue East
Right on Wendover Avenue East
Left on Holden Road
Right on Cornwallis Drive
Left on Princess Ann Street



BUILDING STRONG COMMUNITY



- Moulding & Trim
- Lumber
- Windows & Doors
- Cabinets
- Decking & Railing
- Roofing



WOLFE HOMES

603 East 17th Street • Winston-Salem
336.722.8167 • www.smithphillips.net

GBA PARTICIPATING MEMBERS

A Sani-Can Service, Inc.
A B C Supply
AC Gutters, Inc.
Avery Tile, Inc.
Beeson Hardware & Lumber Co.
Borum, Wade & Associates, PA
Builders Fireplace & Stone
Builders' Insulation
Carpet One By Henry
Colonial Materials, Inc.
Ferguson Enterprises, Inc.
Florida Tile, Inc.
HomeTeam Pest Defense
Ivey Lane, Inc.
King Electric Co., Inc.
Pella Windows & Doors
Piedmont Natural Gas Co.
Piedmont Wholesale Engineered Products
Pine Hall Brick Company
Scott Stone, Inc.
Smith Phillips Building Supply
The Sherwin-Williams Company
Truist



Tyler Hickernell
Sales Manager
NMLS# 1210625 | NC license # I-162422
Cell: 336-423-3542
thickernell@certaintyhomeloans.com



Donald L. Caldwell
Senior Loan Officer
NMLS# 1747280 | NC Lic. # I-181430
Cell: 336-307-0577
dcaldwell@certaintyhomeloans.com



Megan Critz
Production Manager
NMLS# 868421 | NC License # I-159628
Cell: 336-442-3728
MCritz@certaintyhomeloans.com



Amy Cain
Sales Manager
NMLS# 551911 | NC License # I-1889600
Cell: 336-479-2101
acain@certaintyhomeloans.com



John Caldwell
Loan Officer
NMLS# 2268430 | NC License # I-207760
Cell: 336-307-0522
john.caldwell@certaintyhomeloans.com



Pamela Caldwell, CMPS
Branch Manager
NMLS# 83707 | NC License # I-124363
Cell: 336-259-8187
pcaldwell@certaintyhomeloans.com

Certainty Home Loans, LLC | NMLS# 2146
CertaintyHomeLoans.com
811 E Mountain St., Suite 302 Kernersville, NC 27284



Accepting consumer application from North Carolina, South Carolina and Virginia only. The information is for real estate and financial business entities and is not intended for use as an advertisement for the extension of credit to consumers.

GBA PARTICIPATING MEMBERS

A Sani-Can Service, Inc.
A B C Supply
Colonial Materials, Inc.
FEI Civil Engineers and Land Surveyors
Ferguson Enterprises, Inc.
Fireside Hearth & Home
GAF
General Shale
Ivey Lane, Inc.
Piedmont Wholesale Engineered Products
Scott Stone, Inc.
Sealing Agents Waterproofing, Inc.
The Building Center
The Sherwin-Williams Company

CREATIVE BUILDING GROUP, INC.

29



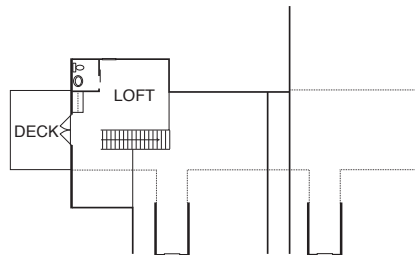
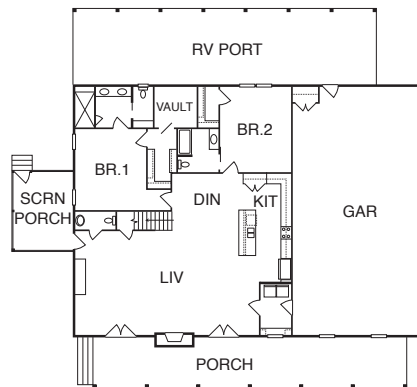
\$964,900 | 2850 sq ft
3 Bedrooms, 3.5 Baths

BUILDER

Creative Building Group, Inc.
James Critz
336.885.9213
jcritz@creativebuildingnc.com
www.creativebuildingnc.com

SPECIAL FEATURES

- Beautiful 28' vaulted ceiling in main living area
- Level entry into the house with aging-in-place features
- Walk-in safe room
- Screened porch and custom outdoor living area
- Custom landscaping and lighting designs



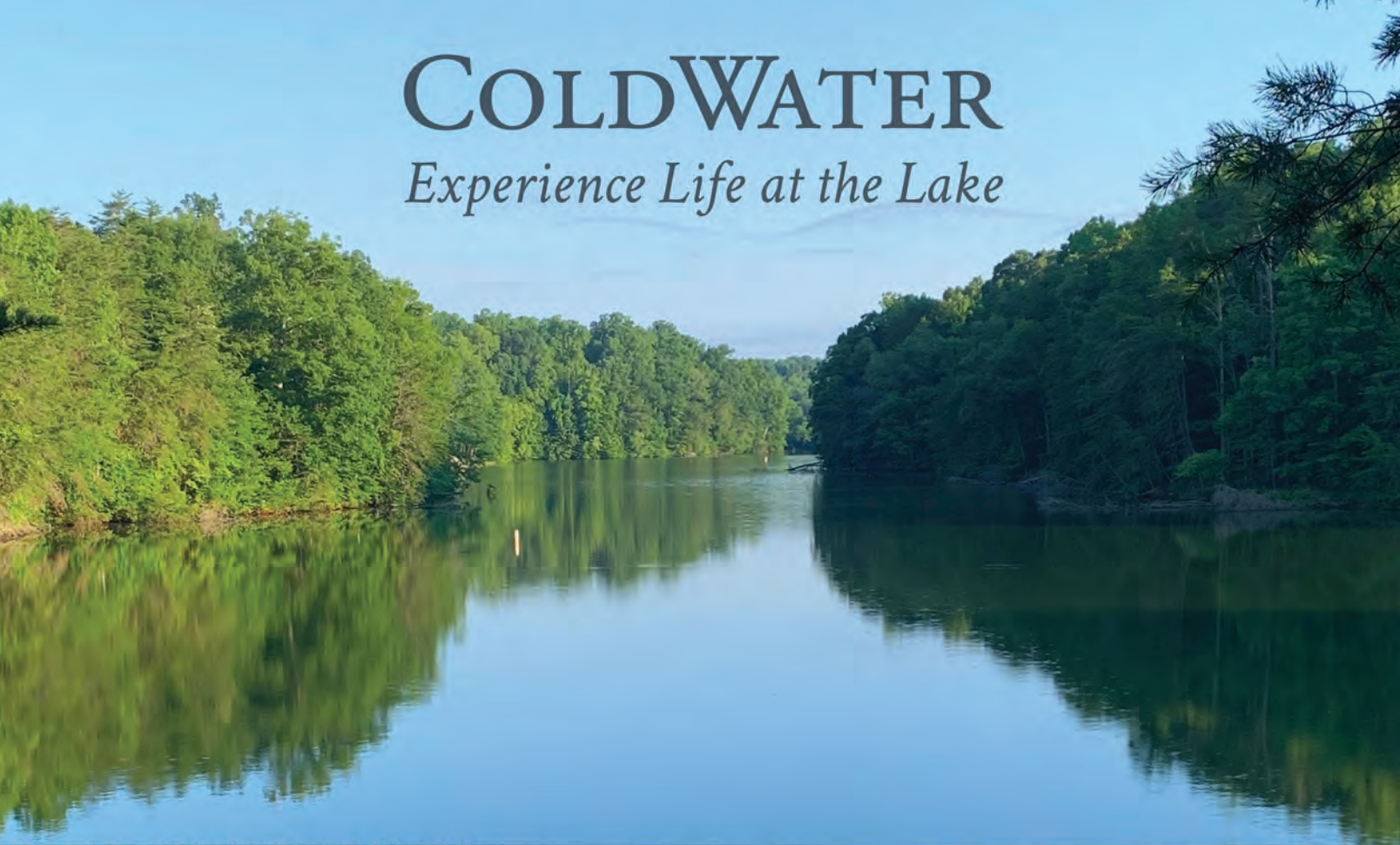
VIRTUAL TOUR ONLY

www.GreensboroBuilders.org

In-Person By Appointment Only

COLDWATER

Experience Life at the Lake



NATURE



WATER



LIFE



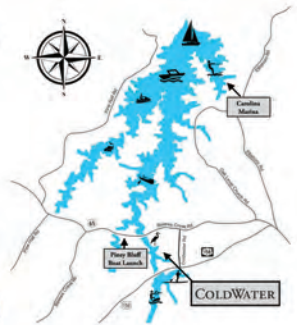
54 Exceptional Home Sites at Belews Lake

Greenway and Trails ♦ 14 Acres Nature Preserve

Natural Fishing Pier ♦ Paddleboards & Kayaks

Fitness Room ♦ Resort Style Pool ♦ Sunset Terrace

PHASE II OPENS SEPTEMBER 2022!!!



8227 Coldwater Road | www.coldwater.life

VISIT OUR
SHOWROOM
TODAY!

WOLFE HOMES

30

120 south walnut circle
greensboro, nc 27409

(336) 851-2622

floridatile
www.floridatile.com



\$1,075,000 | 3866 sq ft
4 Bedrooms, 3.5 Baths

BUILDER

Wolfe Homes
Will Wolfe
(336) 299-2969
will.wolfe@wolfehomes.com
www.wolfehomes.com

SPECIAL FEATURES

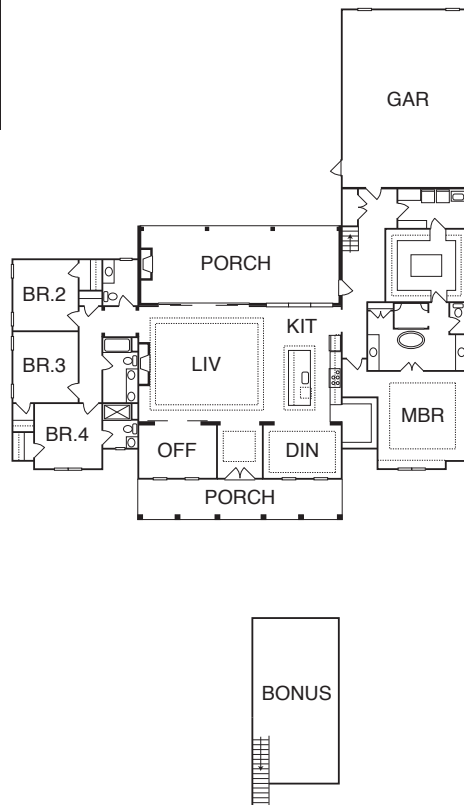
- In-ground pool
- Walk-in hidden pantry
- Walnut fireplace surround
- Rocking chair front porch
- Bonus room

LOCATION

Coldwater
6812 Cold Water Terrace
Stokesdale

DIRECTIONS

Hwy 68 North to Stokesdale
Left at Stokesdale light onto US-158 West
Left to stay on US-158 West
Right on Coldwater Road
Left on Cold Water Terrace



GBA PARTICIPATING MEMBERS

A Sani-Can Service, Inc.
A B C Supply
AC Gutters, Inc.
Avery Tile, Inc.
Beeson Hardware & Lumber Co.
Borum, Wade & Associates, PA
Builders Fireplace & Stone
Builders FirstSource
Builders' Insulation
Carpet One By Henry
Colonial Materials, Inc.
Dixon Custom Cabinetry, LLC
Ferguson Enterprises, Inc.
Florida Tile, Inc.
HomeTeam Pest Defense
Ivey Lane, Inc.
King Electric Co., Inc.
Pella Windows & Doors
Piedmont Natural Gas Co.
Piedmont Wholesale Engineered Products
Pine Hall Brick Company
Scott Stone, Inc.
Smith Phillips Building Supply
The Sherwin-Williams Company
Truist



\$1,095,000 | 4516 sq ft
4 Bedrooms, 5.5 Baths

BUILDER

Gingerich Homes, Inc.
Daniel Gingerich
336.669.7708
gingerich.homes@gmail.com
www.gingerichhomes.com

SPECIAL FEATURES

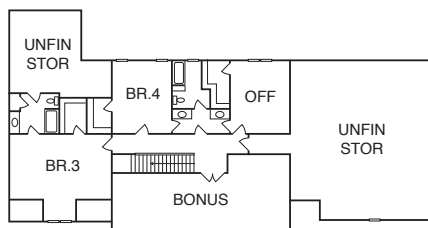
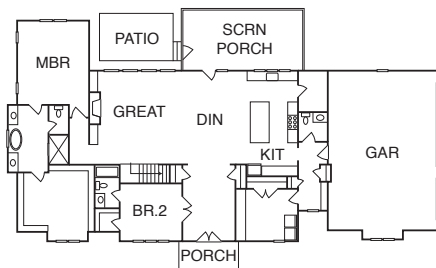
- Luxurious gourmet kitchen
- Every bedroom has its own private bath
- Extensive trim work throughout
- Oversized upstairs bonus room
- Large screened-in patio overlooking private backyard

LOCATION

The Farm at Lake Brandt
1109 Hayes Farm Drive
Summerfield

DIRECTIONS

Highway 220 North
Right on Scalesville Road
Left on Hayes Farm Drive



COME VISIT OUR SHOWROOM!

MON, TUE, WED, & FRI:

8:30AM-5PM

THURS: 8:30AM-6PM

SAT: 9AM - 2PM

WE ARE YOUR
ONE-STOP RESOURCE
FOR KITCHEN
& BATH SURFACES!

**CAROLINA
CUSTOM
SURFACES**



Kitchen and Bath Countertops • Showers • Bathtubs

100 Landmark Drive, Greensboro, NC 27409

www.carolinacustomsurfaces.com

336-299-3030

@carolinacustomsurfaces



GBA PARTICIPATING MEMBERS

A Sani-Can Service, Inc.
A B C Supply
Allen Tate Smith Marketing – Jeff Smith
Builders Fireplace & Stone
Butler Lighting
Carolina Custom Surfaces
Colonial Materials, Inc.
Dixon Custom Cabinetry, LLC
Ferguson Enterprises, Inc.
General Shale
J&G Quality Construction, LLC
Overhead Door Company of Greensboro
Piedmont Natural Gas Co.
Piedmont Wholesale Engineered Products
Right Touch Interiors
Stone Pro
Studio Tile & Design, Inc.
The Building Center
The Sherwin-Williams Company
Toledo Competition Paint, LLC
Truist

Ready To Build Your Dream Home?

GEORGEANNE WYRICK
NMLS# 617888
LACEY DILLON
NMLS# 1558828

Let us help you streamline the building process with a One-Time Close Construction Loan. From pre-approval to closing - we'll be right by your side every step of the way.

- A single closing to save you time and money
- Lock in your permanent mortgage rate during the construction phase
- No origination fee on your permanent mortgage
- Interest only payments during the construction phase
- Flexible terms
- No charge for periodic inspections¹



CONTACT GEORGEANNE WYRICK OR LACEY DILLON TO GET STARTED!

8110 US Highway 158 · Stokesdale · 336.643.8801 or 336-544-7575 · rightbbyoumortgage.com/build

¹ No charge for periodic inspections within 40-miles of a Fidelity Bank branch. An inspection fee of approximately \$75 will apply for homes more than 40-miles away from a Fidelity Bank branch. Credit approval required. Member FDIC. Equal Housing Lender. NMLS# 402136.



A Home with Space for Everyone

New homes are designed to meet your modern family's changing needs.



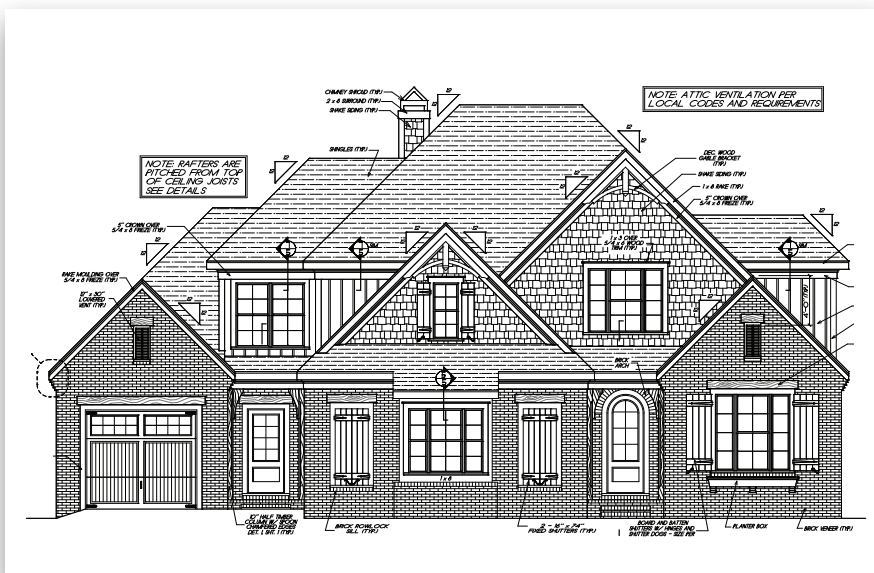
Learn more about buying and owning a home at nahb.org/consumers.
www.GreensboroBuilders.org

Homes Coming Soon...

Currently under construction, the following homes have estimated completion dates in the spring / summer of 2023. Please contact the builders in this section to learn more about these homes and others they may have available.

BRIAN DISNEY HOMES, INC.

Brian Disney • 336-362-6067 • briandisneyhomes@gmail.com • www.briandisneyhomes.com



LOCATION

Lot 79 North Ridge
7605 White Retreat Court
Stokesdale

SPECIAL FEATURES

- Open concept living area
- Spacious master suite
- Great outdoor living with large rear covered porch
- 3 car garage
- 2 bedrooms and 2 full baths on main floor
- Custom cabinets and quality finishes

Estimated Completion: April 2023



LOCATION

Hickory Ridge
Lexington, NC
Hayden Rendering Express

1,764- 2,644 Sq. Ft.

SPECIAL FEATURES

- Open floor plans
- Home office (per plan)
- Quartz countertops in bathrooms
- Granite countertops in kitchen
- Stainless steel appliances
- Home is Connected® Smart Home System



LOCATION

Bakersfield
Kernersville, NC
Washington Rendering

2,181- 3,456 Sq. Ft.
4 floor plans in lineup

SPECIAL FEATURES

- Large homesites ranging from .40 to .50 acres
- Granite or quartz countertops in kitchen
- Quartz countertops in the bathrooms
- Fireplace in living room
- Ceramic tile backsplash in kitchen
- Stainless steel appliances
- Home is Connected® Smart Home System

FRIDDLE AND COMPANY, INC.

Paige Friddle • 336-908-0966 • info@friddleandcompany.com • www.FriddleAndCompany.com



Estimated Completion: Spring 2023

LOCATION

The Farm at Lake Brandt, Lot 23

1105 Hayes Farm Drive, Summerfield

4 beds/4 baths/4428 sq ft

SPECIAL FEATURES

- Expansive, covered porches overlooking pond
- Grand home with 10'+ ceilings on first floor and spacious rooms
- U shaped kitchen to take in pond views, serving island and butler's pantry
- Primary bedroom suite and guest suite on first floor
- Two bedroom suites, office and bonus on second floor
- Lot will accommodate a pool



Estimated Completion: Spring 2023

LOCATION

Pemberley, Lot 11

7604 Pemberley Drive, Oak Ridge

4 beds/4 baths/4402 sq ft

SPECIAL FEATURES

- Spacious kitchen and breakfast adjoining great room with 11' coffered ceiling
- Great room quad sliders open to screened porch
- Primary bedroom suite and guest suite on first floor
- Stairs, drop zone and laundry located near garage and kitchen
- Two bedroom suites, office, bonus and media on second floor
- Lot will accommodate a pool



Estimated Completion: Spring/Summer 2023

LOCATION

Oak Ridge Landing, Lot 37

8194 Falcon Trail, Oak Ridge

4 beds/4 baths/4351 sq ft

SPECIAL FEATURES

- Amazing, open plan with curved staircase and generous room sizes
- Kitchen and breakfast flow into living room for ease of entertaining
- Living room quad sliders open to screened porch and view of pond
- Primary bedroom suite and guest suite on first floor
- Two bedroom suites, office, recreation room and bonus on second floor
- Walk in attic storage



LOCATION

Riverside Lot #57

6844 Shields Drive, Oak Ridge

3,800 sq ft 4 Bedroom, 4 Bath

SPECIAL FEATURES

- Master, guest bedroom and office on main
- Open floor plan
- Screened porch
- Large walk-in pantry
- 2 bedroom and 2 baths and bonus room on second level
- Community pool and clubhouse



LOCATION

Pemberley Lot #17

7607 Pemberley Drive, Oak Ridge

4,478 sq ft 4 Bedroom, 4 Bath

SPECIAL FEATURES

- Master, guest bedroom on main
- Open floor plan
- Large covered porch
- Large kitchen and large walk-in pantry with additional cabinetry
- 2 bedroom, 2 baths, bonus room, play room & additional laundry on second level



LOCATION

Wolf Ridge Lot #21

5682 Timber Trace, Oak Ridge

3,984 sq ft 4 Bedroom, 4 Bath

SPECIAL FEATURES

- 4 car garage
- Master, guest bedroom, keeping room on main
- Open floor plan
- Large covered porch
- Kitchen w/ hidden walk-in pantry
- 2 bedroom, 2 baths, bonus room, office on second level



2022 SPONSOR CLUB

DIAMOND



GOLD



SILVER

Blossman Gas, Inc.
Colonial Materials, Inc.
Pine Hall Brick Company

BRONZE

Alamance Iron Works
Cinch Home Services
First National Bank
Greensboro Kitchen & Bath
Piedmont Natural Gas Co.
Pinnacle Bank
Wholesale Ceramic Tile, Inc.

GreensboroBuilders.org

Your Industry Resource



GBA members are industry professionals dedicated to supporting their trade association as well as community. From increasing their knowledge through educational programs...to advocating for affordable housing...to providing community service...GBA members strive to give back to others within the building industry and community.

We encourage you to utilize the **Greensboro Builders Association** as your "go-to" industry resource. With more than 180 licensed general contractors, our building professionals can help you navigate through your new construction and/or renovation project.

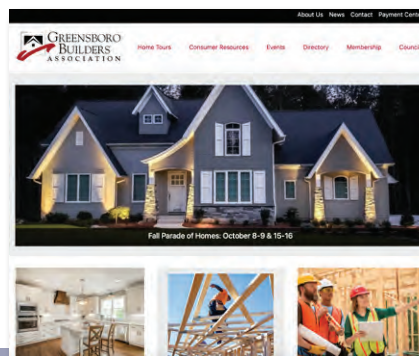
Builder members are those companies that maintain an active NC General Contractors license. These members specialize in residential and commercial construction and remodeling. Associate members are industry professionals that work with our licensed general contractors...they are trade contractors, suppliers and service providers.

As you start to think about building or buying a new home, renovating or remodeling your existing home, or your next home improvement project or service needs...we encourage you to begin your search using our online membership directory...whether it be for a licensed general contractor or for the industry professionals our builders trust.

www.GreensboroBuilders.org



Building or Remodeling



Utilize our
**online membership
directory of industry
professionals**

Follow Us
Greensboro Builders Association



www.GreensboroBuilders.org

We have just the right home in just
the right neighborhood for you!

THE CROSSING
at
NorthRidge
Luxury Custom Homes

**HAYNES
MEADOW**
Summerfield | Rockingham County

PROVIDENCE GLEN
NewHomes | Rockingham County

NorthRidge
New Homes

Parkers View
AT BETHEL RIDGE
New Homes

Shiloh
New Homes

**KNIGHT'S
LANDING**
New Homes

**HONEYCUTT
RESERVE**
New Homes

Riverside
in Oak Ridge
New Luxury Custom Homes

VILLAGE WOODS
New Homes

COMING SOON
Maintenance-Free
Townhomes

LION'S GATE
Estate Lots

BRIDLETON
— RIDGE —
New Homes

COMING SOON
Maintenance-Free
Townhomes

**GRANDOVER
RESIDENTIAL**
New Home Lots

MONTROSE VILLAGE
— AT GRANDOVER —
New Homes

Elim
Maintenance-Free
New Townhomes

**CANNON
— CROSSING —**
New Homes

MACKINTOSH
New Homes

BETHANY
New Homes

COMING SOON
ASHER
New Townhomes

**ANGELS
LANDING**
New Homes

THE FARM
New Homes

**PEMBERLEY ESTATES
AT OAK RIDGE**
New Luxury Custom Homes

CANTER COVE
New Homes



**TREELINE
AT TRAILS**
New Homes



Monrovia

Stokesdale

Summerfield

Oak Ridge

Waketown

Kernersville

McLeansville

Greensboro

Whitsett

Pleasant Garden

High Point

Warg



JEFF SMITH: 336.215.7880 • jeff.smith@allentate.com | BETTY SMITH: 336.451.4923 • betty.smith@allentate.com
JASON SMITH: 336.451.4921 • jason.smith@allentate.com | SmithMarketingInc.com





AQUATIC DESIGNS, INC.
www.adipools.net



Designing, constructing and renovating the finest quality concrete pools, spas, fountains and splashpads since 1989!

(336) 674-7665

